

To Add, Modify, Customize Sheet Metal Stock

Notes in the readme from 2014. The Tooltbl and Stocktbl are split (one for stock one for form and punches).

Sheet Metal Tooltbl.txt and Stocktbl.txt for Metric Systems

* Please note that beginning with this release (v2014) we have separated the data related to Sheet Metal Stock from the Tooling data used to define Sheet Metal Punches and Forms. Sheet Metal Stock data will reside in the Stocktbl.txt file and Punch and Form Tooling data will reside in the Tooltbl.txt file. As a result, you have also been provided with Metric versions of these two data files.

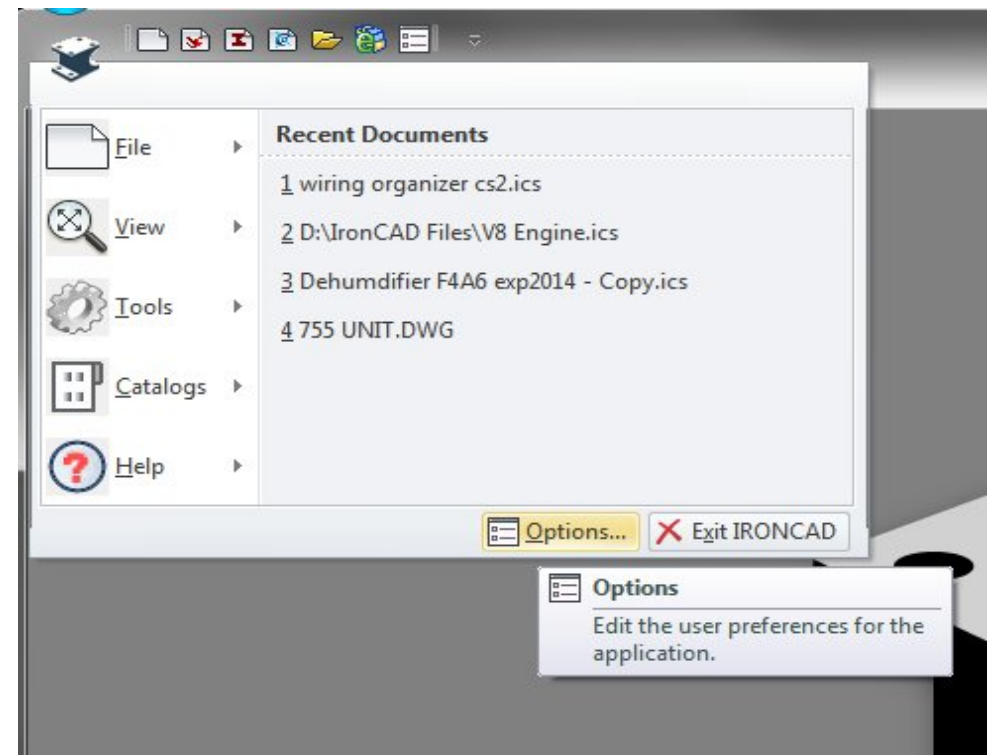
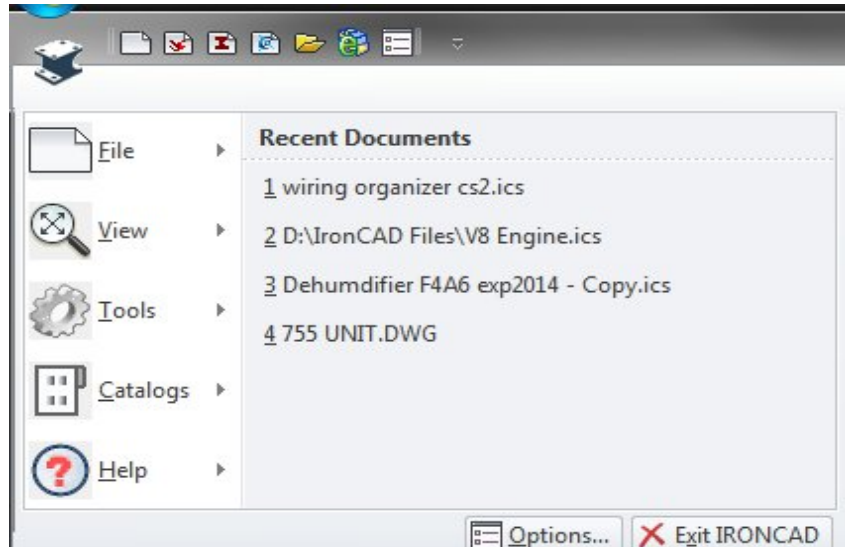
* If you are running under Metric units and wish to change your Sheet Metal Punch and Form to use metric units, rename the tooltblMetricEU.txt or tooltblMetricUS.txt to Tooltbl.txt in the \Program Files\IronCAD\2014\AppData\en-us\SheetMetal location to have a metric based Sheet Metal table data. You will need to rename the current file in the directory to make a backup. If you do not have Administrator privileges on your machine, you may need to move the file to C:\Documents and Settings*Username*\Application Data\IronCAD\IRONCAD\16.0\en-us\SheetMetal in order for IRONCAD/INOVATE (Vista Machines use C:\Users*Username*\AppData\Roaming\IronCAD*Product*\16.0 - where *Product* is IRONCAD, INOVATE, or IRONCAD DRAFT) to use the updated file. This change may cause existing sheet metal to lose editable table fields or may change the geometry if a new value is selected from the new table. Users should test the change to understand the changes that may occur.

* If you are running under Metric units and wish to change your Sheet Metal Stock to use metric units, rename the StocktblMetricEU.txt or StocktblMetricUS.txt to Stocktbl.txt in the \Program Files\IronCAD\2014\AppData\en-us\SheetMetal location to have a metric based Sheet Metal table data. You will need to rename the current file in the directory to make a backup. If you do not have Administrator privileges on your machine, you may need to move the file to C:\Documents and Settings*Username*\Application Data\IronCAD\IRONCAD\16.0\en-us\SheetMetal in order for IRONCAD/INOVATE (Vista Machines use C:\Users*Username*\AppData\Roaming\IronCAD*Product*\16.0 - where *Product* is IRONCAD, INOVATE, or IRONCAD DRAFT) to use the updated file. This change may cause existing sheet metal to lose editable table fields or may change the geometry if a new value is selected from the new table. Users should test the change to understand the changes that may occur.

Regional Settings for your OS. Control Panel -> Region and Language. In the Formats page, at the bottom is "Additional settings...". Check the settings that you have currently setup for Decimal Symbols, digit grouping symbol, etc. The Tool and Stock tables are processed based on these settings. If you are trying to process a table where the decimals use the comma, while your system thinks Decimal symbol is a period, it will cause a problem.

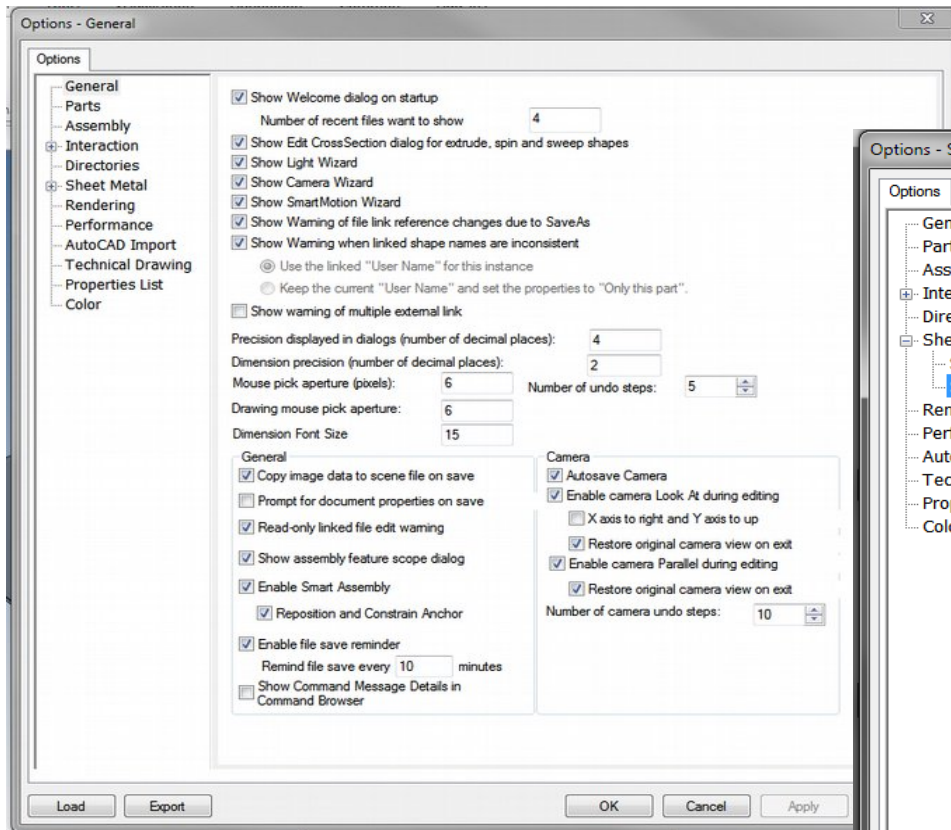
To Add, Modify, Customize Sheet Metal Stock

Click on the IRONCAD symbol on the Top left hand corner of your screen as shown.

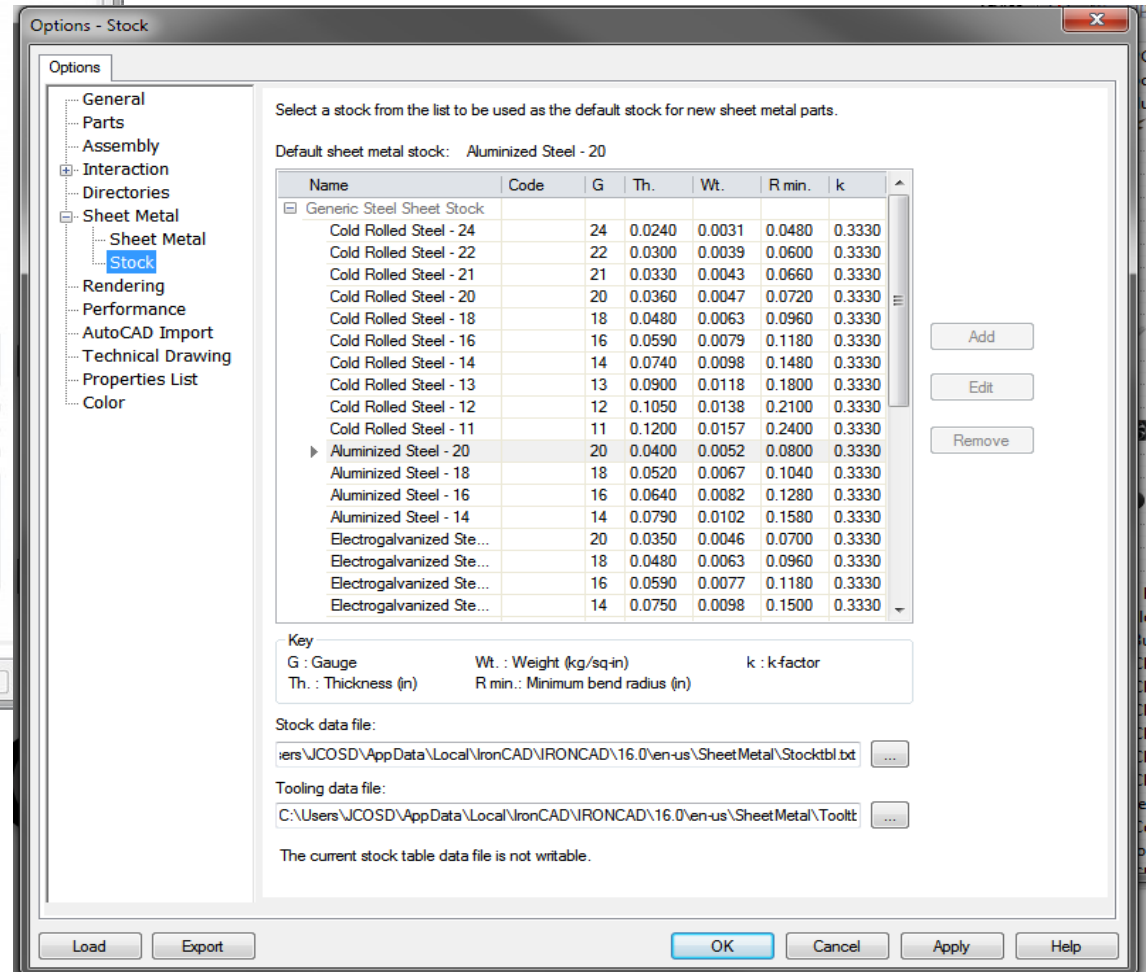


Select the Options below this drop down overlay

Look for Sheet Metal on the list and tick to expand



Select Stock to display the sheet metal list



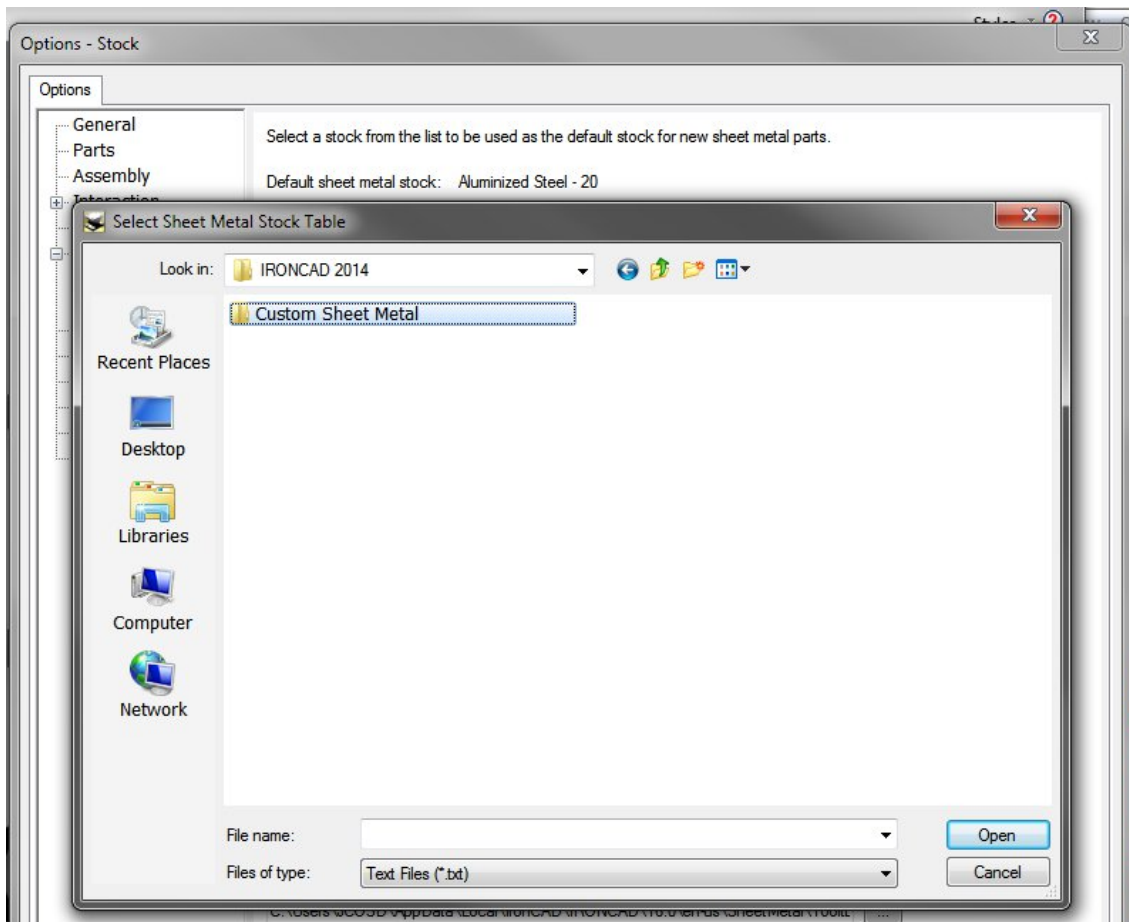
Look for Stock data file which by default is location and copy the Stocktbl.txt file or go to C:\>Program Files > IronCAD > 2014 > en-us > SheetMetal and select from the list. Again you may copy the file is you wish to modify.

Stock data file:

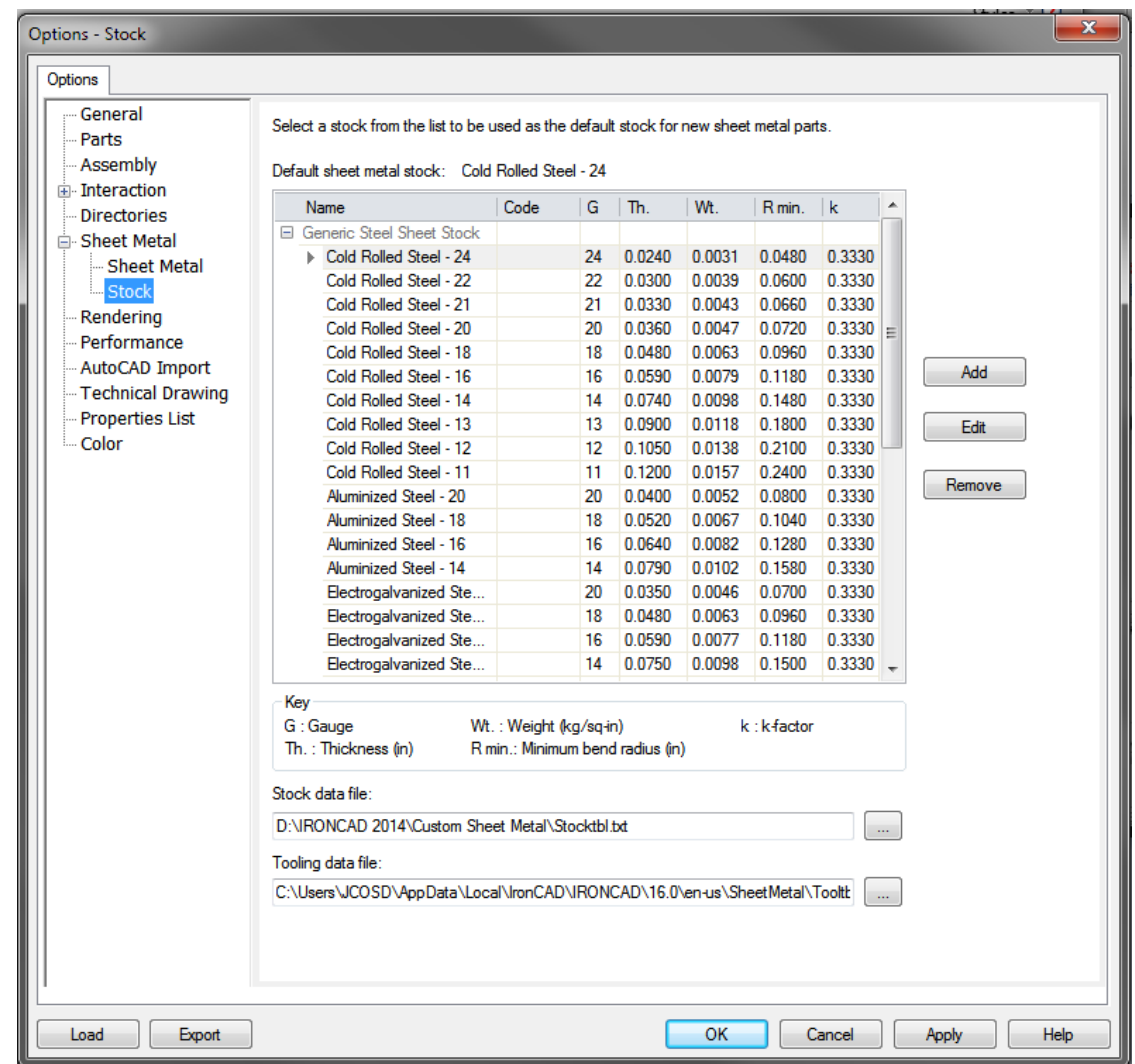
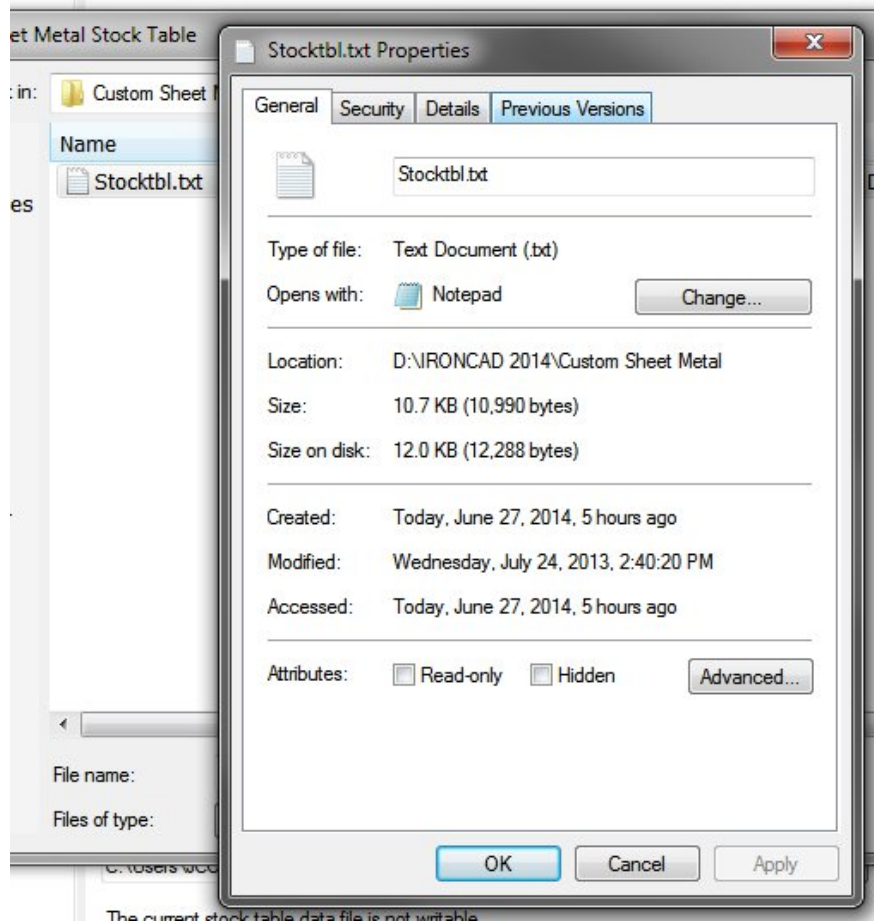
C:\Users\JCOUSD\AppData\Local\IronCAD\IRONCAD\16.0\en-us\SheetMetal\Stocktbl.txt

NOTE: If you selected the StocktblMetricUS.txt, replace the Tool Data File with appropriate tooltblMetricUS.txt file. The MetricEU displays an error reading the tooltbl.txt file, at or near line: 56 if the regional settings is set differently. Please refer to bottom of the first page on regional settings.

Create and name a folder in your selected directory and paste the copied file on this location



Select the file and on the right click on the mouse button, select Properties and untick the Read-only attribute to allow editing later.



Notice that the Add, Edit, Remove features are available

Make sure you all the data available for the new stock properties

