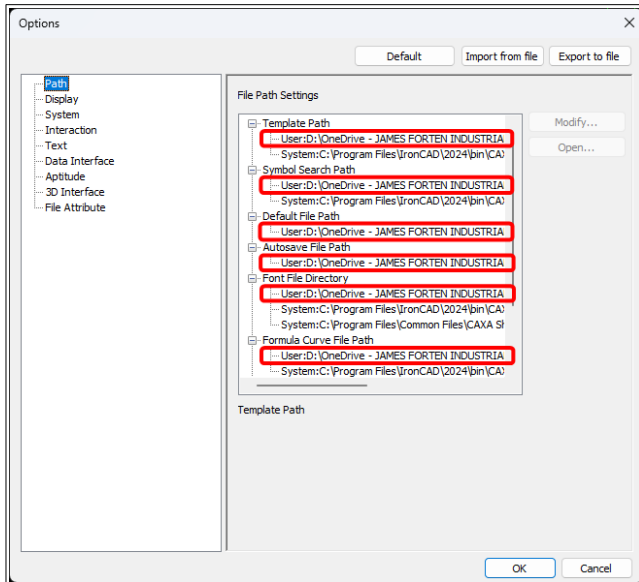
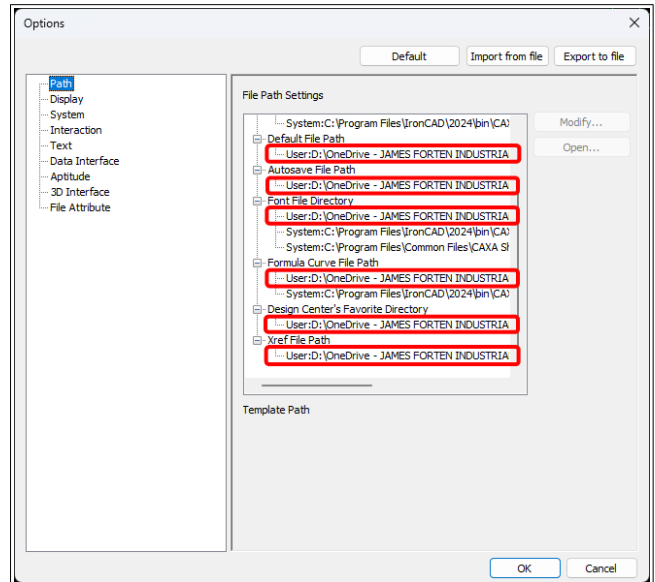


IRONCAD (CAXA) DRAFT - OPTIONS – CUSTOM SETTINGS (2024 PU1)

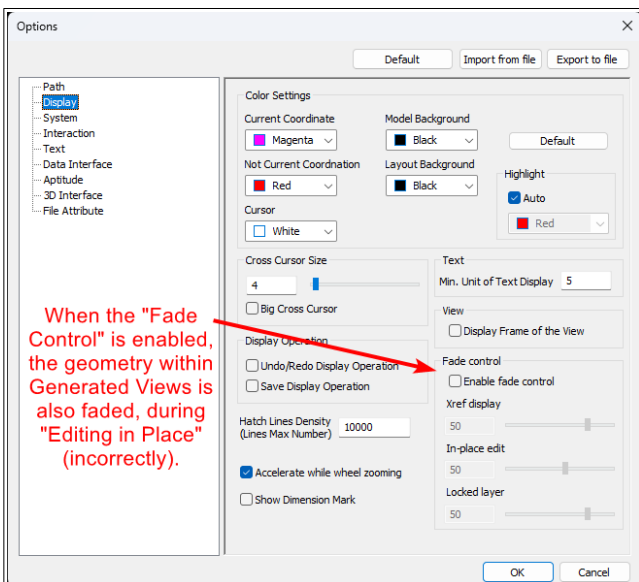
The following images highlight the settings used in “Options”, that differ from the “Default”. These custom settings can be inputted manually (as highlighted in the images), or automatically (by importing a previously saved System Options configuration file).



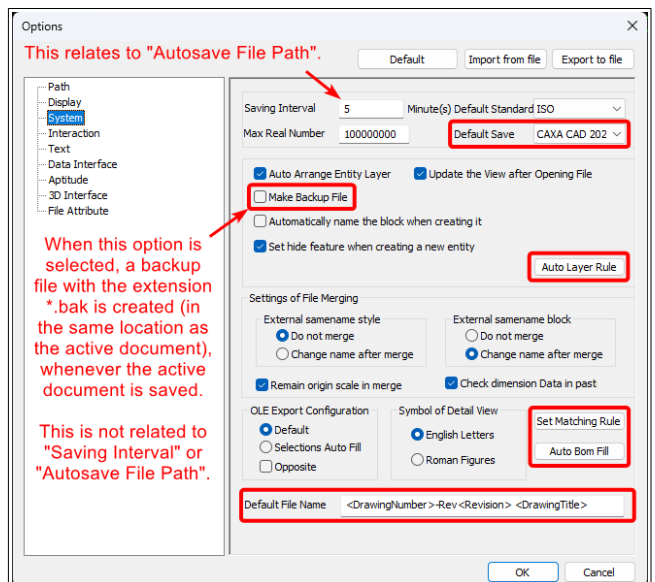
These Paths are Specific to Each User
(shared company folders displayed above)



These Paths are Specific to Each User
(shared company folders displayed above)



Personal Preferences



Company Drawing Standards

The settings within “Auto Layer Rule” are dependent upon the layers in the drawings. The settings within “Set Matching Rule” are dependent upon the Attributes used within the drawing Title Blocks and BOMs.

	Object type	Layer
1	Datum Symbol	Standard Annotations 025
2	Annotation	Standard Annotations 025
3	Geometric Tolerance	Standard Annotations 025
4	BOM	Standard Annotations 025
5	Section Line Symbol	Standard Annotations 035
6	Welding Symbol	Standard Annotations 025
7	Pyramid/Pitch	Standard Annotations 025
8	Table	Standard Annotations 025
9	Surface Finish	Standard Annotations 025

Company Drawing Standards
(see button within System)

The settings within “Auto Layer Rule” are dependent upon the layers in the drawings.

	Object type	Layer
6	Welding Symbol	Standard Annotations 025
7	Pyramid/Pitch	Standard Annotations 025
8	Table	Standard Annotations 025
9	Surface Finish	Standard Annotations 025
10	Item No.	Standard Annotations 025
11	Hatch	Standard Hatching LW3
12	Text	Standard Annotations 025
13	Arc-Aligned Text	Standard Annotations 025
14	Center Lines	Standard Lines Center LW3

Company Drawing Standards
(see button within System)

The settings within “Auto Layer Rule” are dependent upon the layers in the drawings.

	Attribute Name	Match Name
1	QTY	PartQuantity;
2	PART NAME	PartName;
3	PART NUMBER	Part Number;PartNumber;
4	REV	Revision;
5	PART DESCRIPTION	Description;PartDescription
6	MATERIAL DESCRIPTION	MaterialDescription;
7	TYPE	MaterialType;

Company Drawing Standards
(see button within System)

The settings within “Set Matching Rule” are dependent upon the Attributes used within the drawing Title Blocks and BOMs.

	Attribute Name	Match Name
7	TYPE	MaterialType;
8	STANDARD	MaterialStandard;
9	GRADE	MaterialGrade;
10	DESIGNATION	MaterialDesignation;
11	HEIGHT	ShapeHeightY;
12	WIDTH	ShapeWidthX;
13	LENGTH	FrameLength;ShapeLength

Company Drawing Standards
(see button within System)

The settings within “Set Matching Rule” are dependent upon the Attributes used within the drawing Title Blocks and BOMs.

Set Matching Rule

Matching rules:

	Attribute Name	Match Name
13	LENGTH	FrameLength;ShapeLength
14	PATH	3DCurveLength;
15	START	StartTaper;
16	END	EndTaper;
17	MASS	PartMass;
18	VOLUME	PartVolume;
19	DENSITY	MassDensity;

Delete a Line Save Exit

Company Drawing Standards
(see button within System)

The settings within “Set Matching Rule” are dependent upon the Attributes used within the drawing Title Blocks and BOMs.

Set Matching Rule

Matching rules:

	Attribute Name	Match Name
19	DENSITY	MassDensity;
20	AREA	SheetMetalNeutralSurfaceA
21	BEND ANGLE	SheetMetalBendAngleMax;
22	BEND RADIUS	SheetMetalBendRadiusMin
23	K-FACTOR	SheetMetalKFactor;
24	THICKNESS	SheetMetalThickness;
25	NOTE	Note;

Delete a Line Save Exit

Company Drawing Standards
(see button within System)

The settings within “Set Matching Rule” are dependent upon the Attributes used within the drawing Title Blocks and BOMs.

Set Matching Rule

Matching rules:

	Attribute Name	Match Name
24	THICKNESS	SheetMetalThickness;
25	NOTE	Note;
26	DrawingNumber	Part Number;PartNumber;
27	DrawingTitle	Description;PartDescription
28	Revision	Revision;
29	RevisionDate	RevisionDate;

Delete a Line Save Exit

Company Drawing Standards
(see button within System)

The settings within “Set Matching Rule” are dependent upon the Attributes used within the drawing Title Blocks and BOMs.

Config Bom Filling

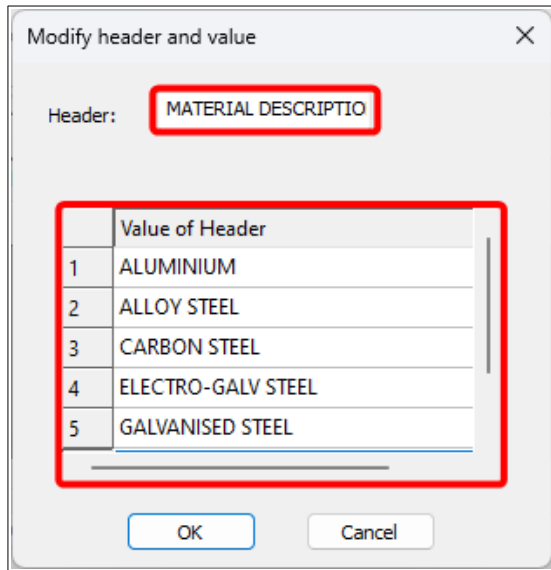
Header-Value:

	Header	Value of Header
1	MATERIAL DESCRIPTI...	ALUMINIUM;ALLOY STEEL;C

Delete a Line OK Exit

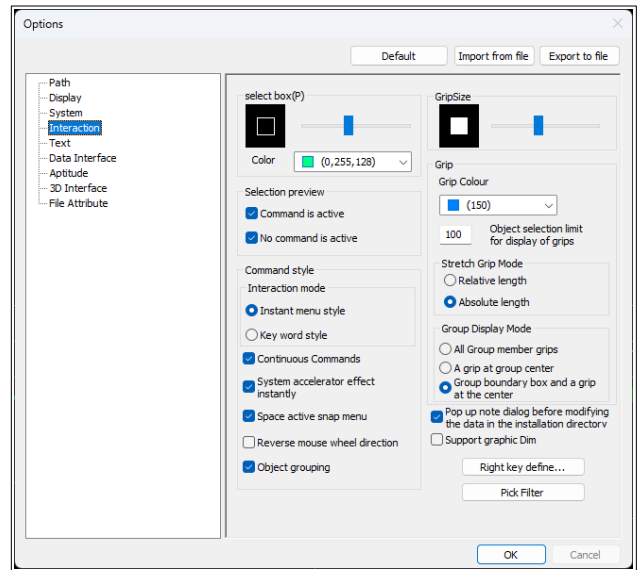
Company Drawing Standards
(see button within System)

The settings within “Auto BOM Fill” need to match the Headers used within the drawing BOM Styles. When filling in the BOM, the values entered here are available within a Combo Box for selection.

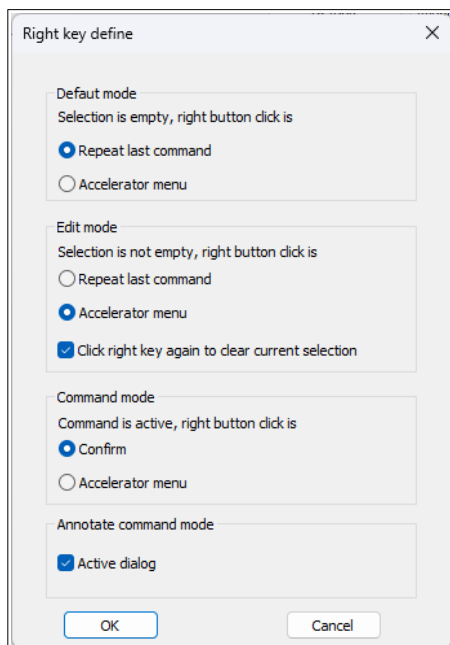


Company Drawing Standards
(see button within System)

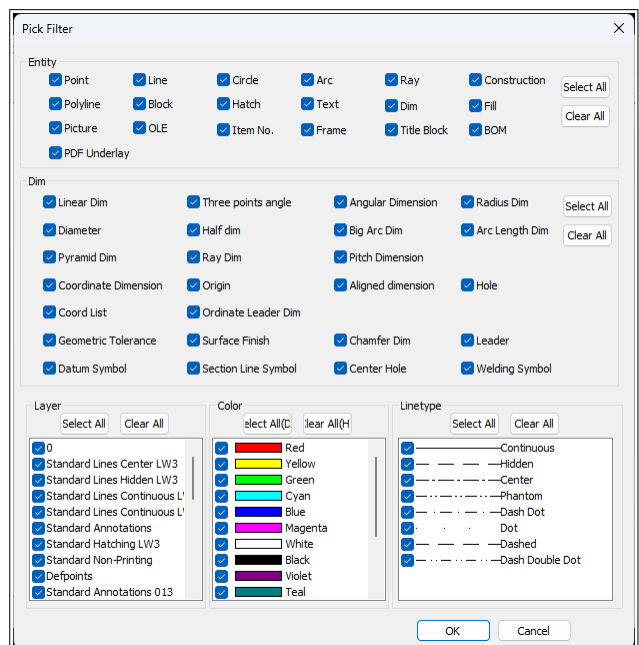
To open, double-click (left-mouse-button)
on an empty row in the previous dialog.



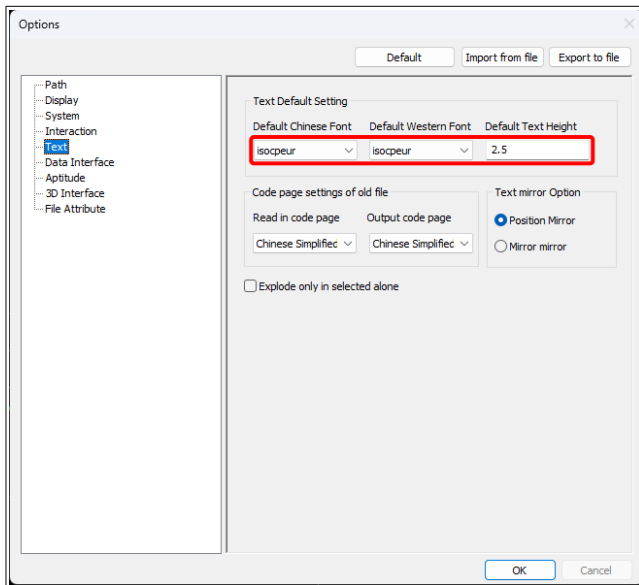
Default
(note the “Right key define...”
and “Pick Filter” buttons)



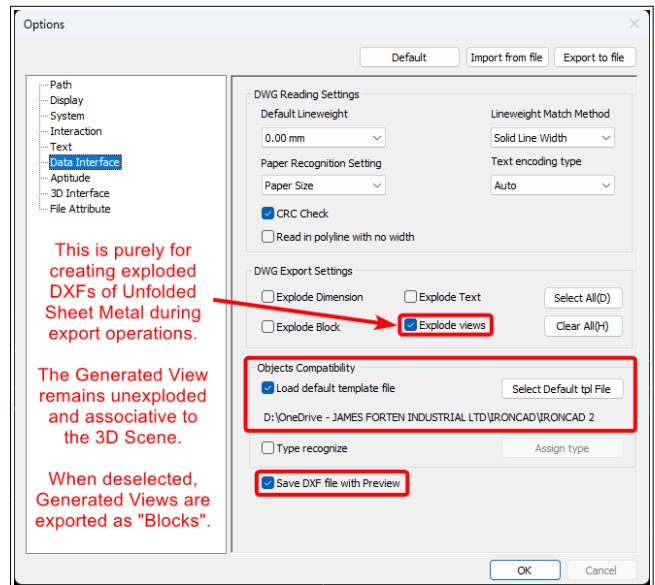
Default
(see button within Interaction)



Default
(see button within Interaction)

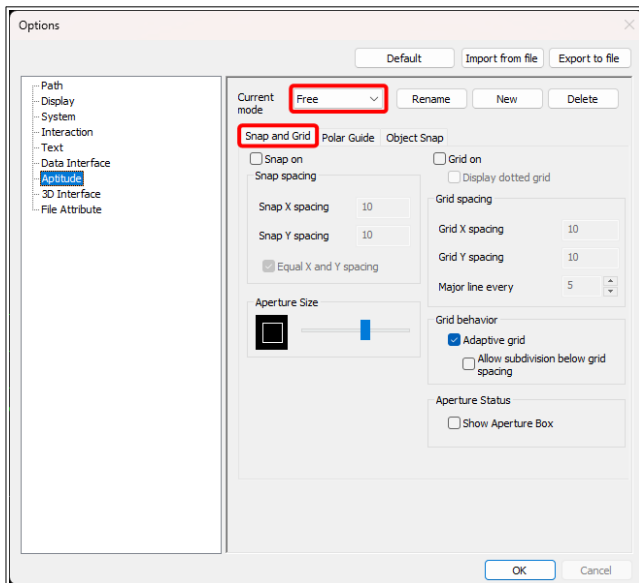


Company Drawing Standards

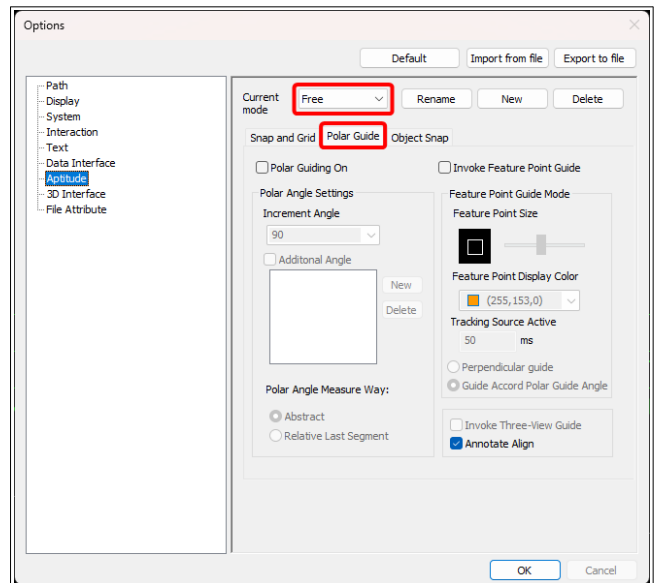


Company Drawing Standards

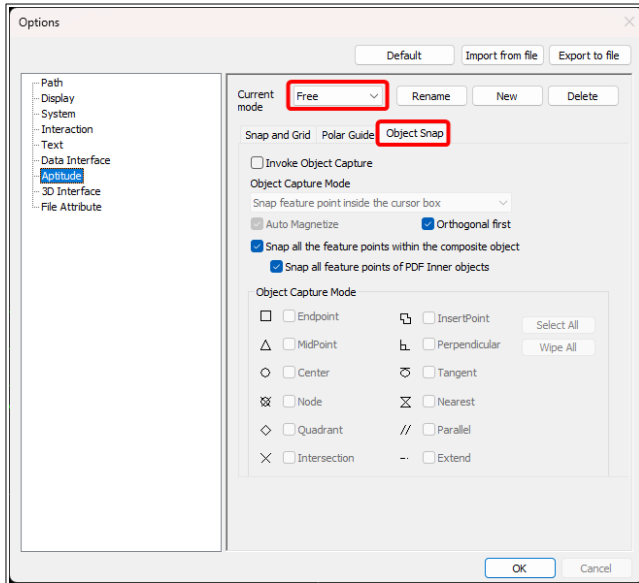
The Template Path is Specific to Each User
(shared company folder displayed above)



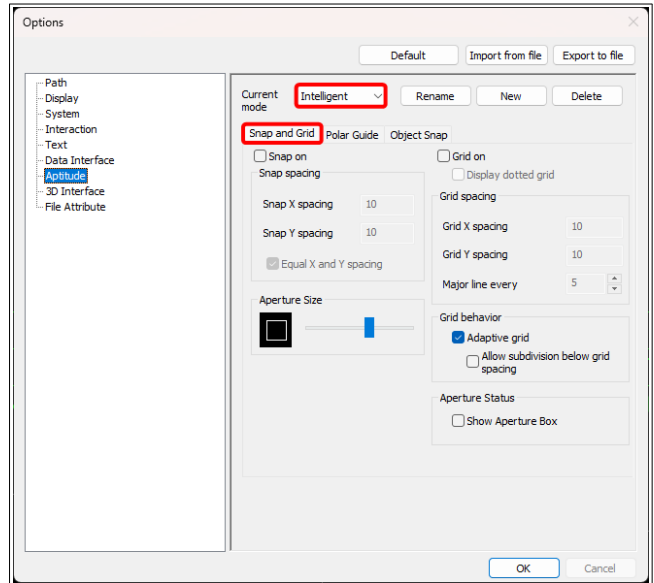
"Free" Capture Mode - Snap and Grid
Default



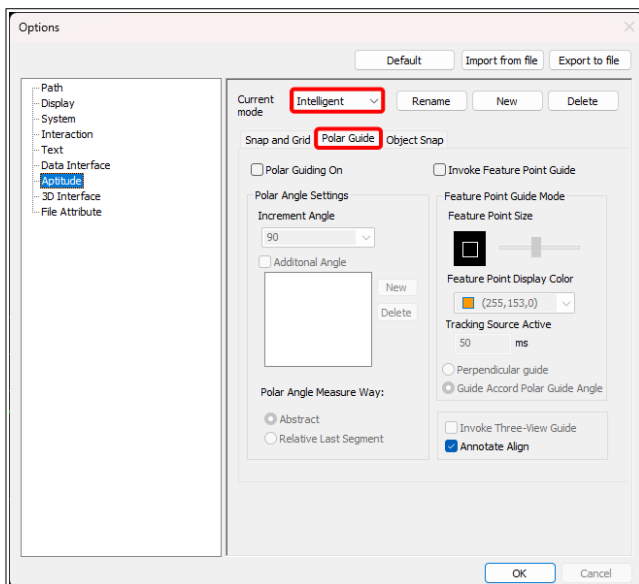
"Free" Capture Mode - Polar Guide
Default



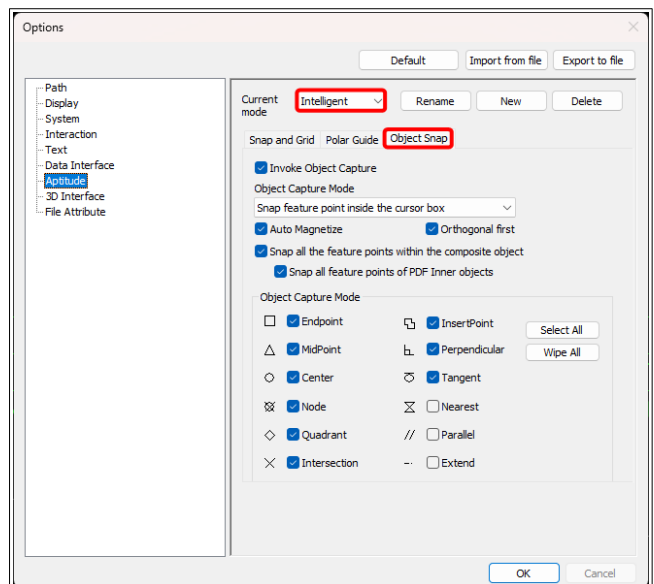
“Free” Capture Mode – Object Snap
Default



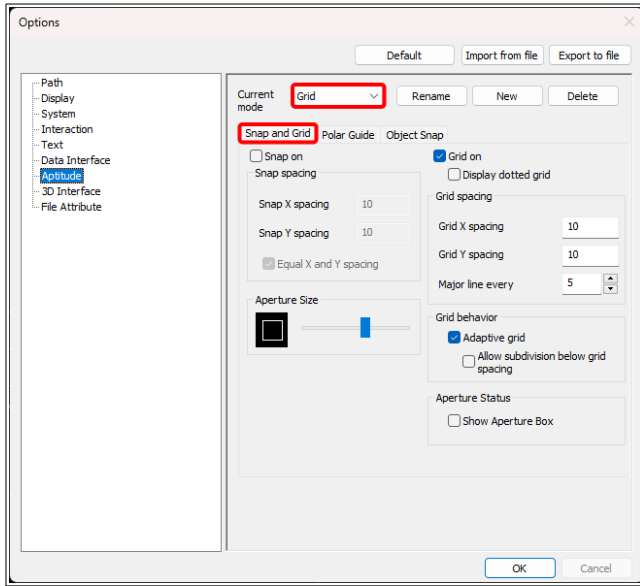
“Intelligent” Capture Mode - Snap and Grid
Default



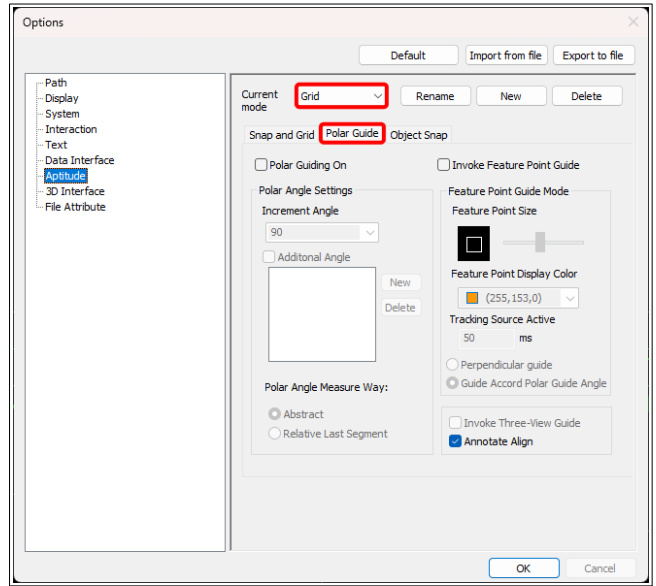
“Intelligent” Capture Mode - Polar Guide
Default



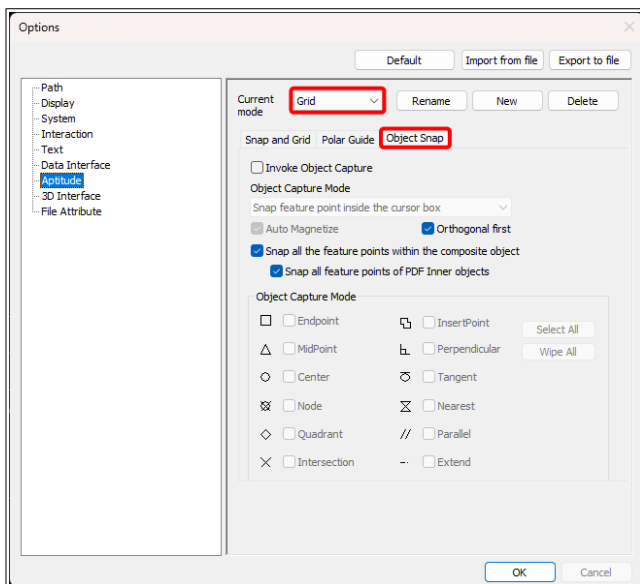
“Intelligent” Capture Mode - Object Snap
Default



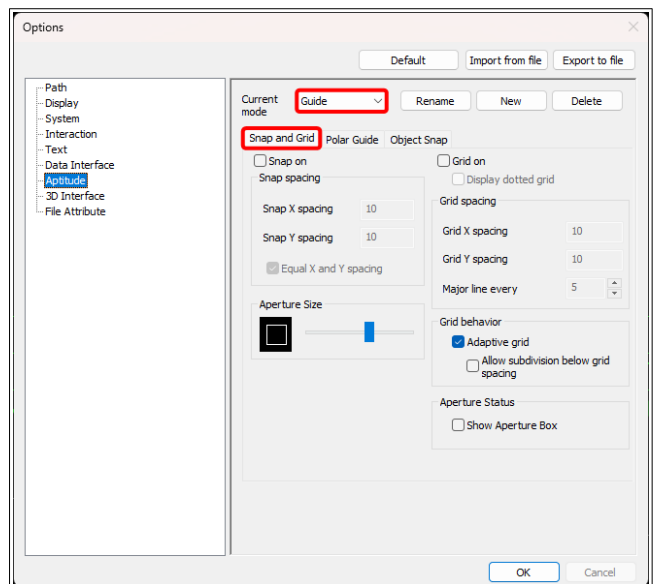
“Grid” Capture Mode - Snap and Grid Default



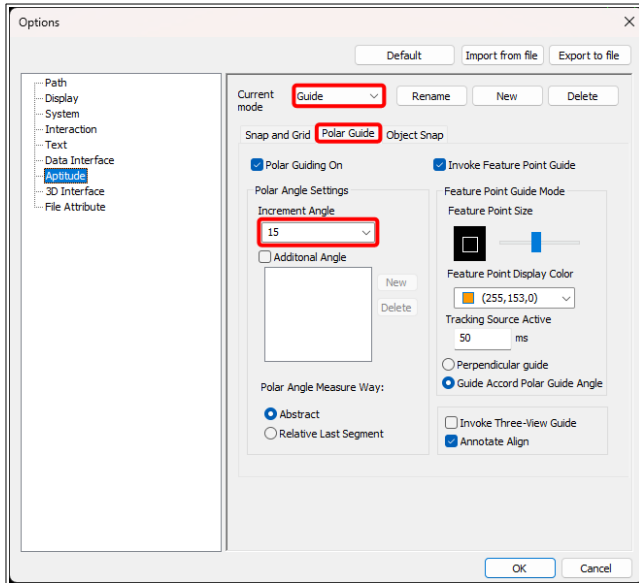
“Grid” Capture Mode - Polar Guide Default



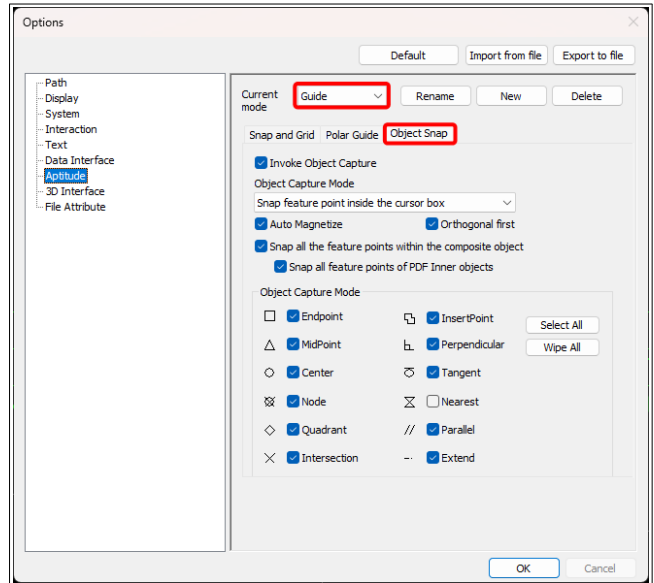
“Grid” Capture Mode - Object Snap Default



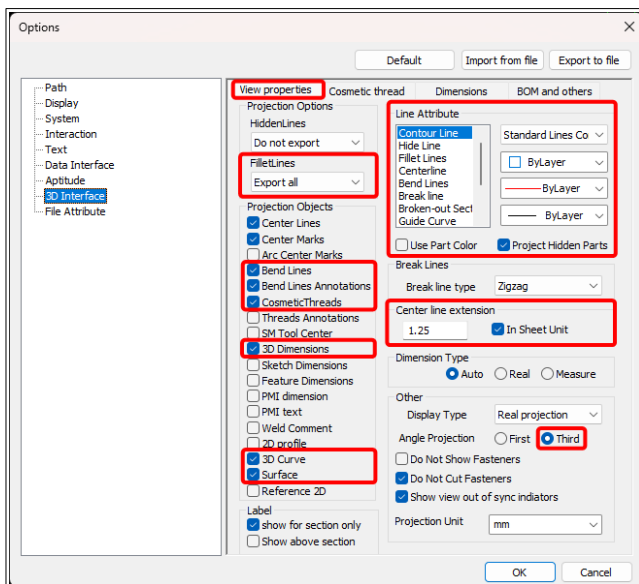
“Guide” Capture Mode - Snap and Grid Default



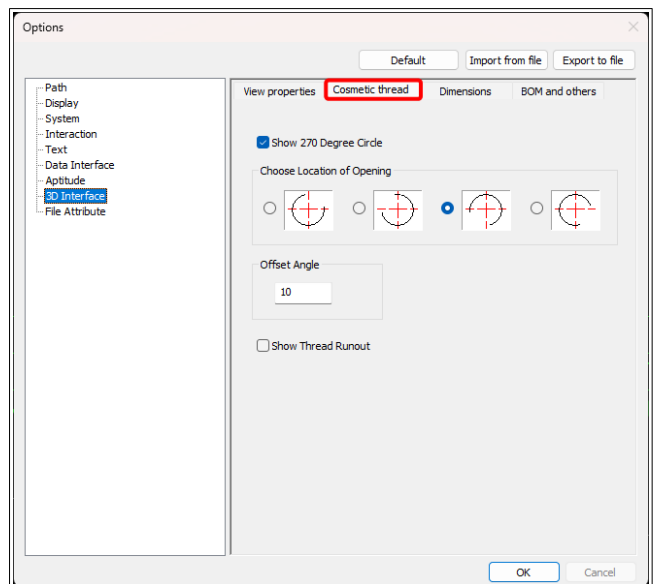
“Guide” Capture Mode - Polar Guide
Personal Preferences



“Guide” Capture Mode - Object Snap
Default

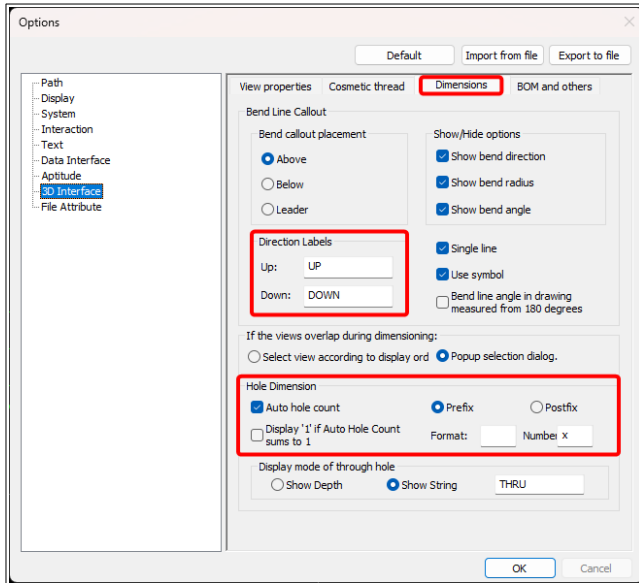


Company Drawing Standards

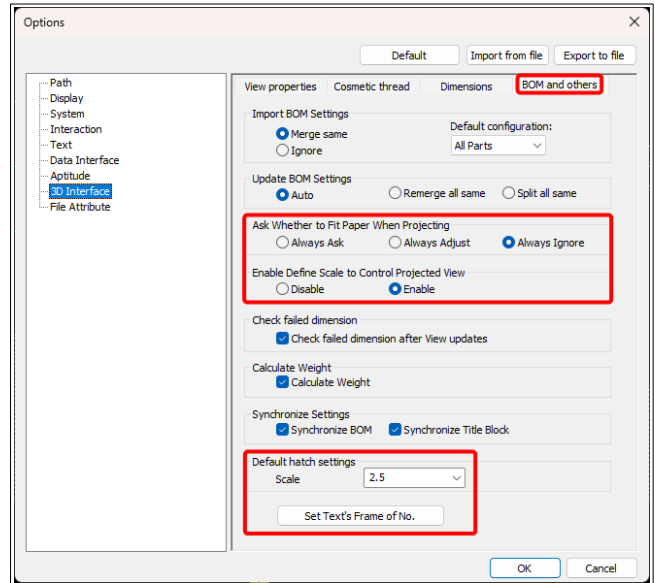


Default

Line Attributes are detailed in the document
“Options - 3D Interface – Line Attributes”.

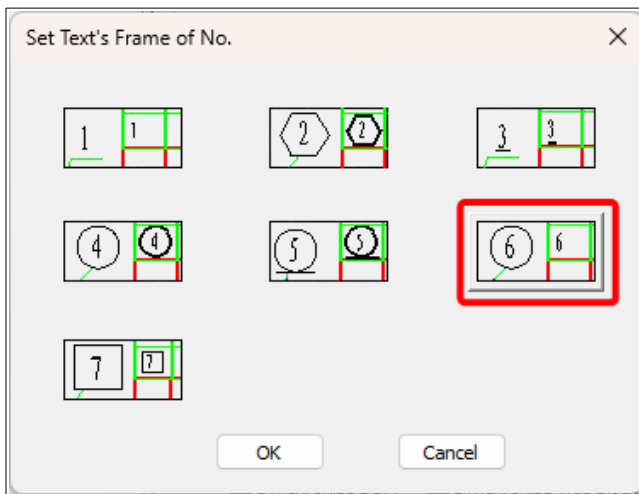


Company Drawing Standards

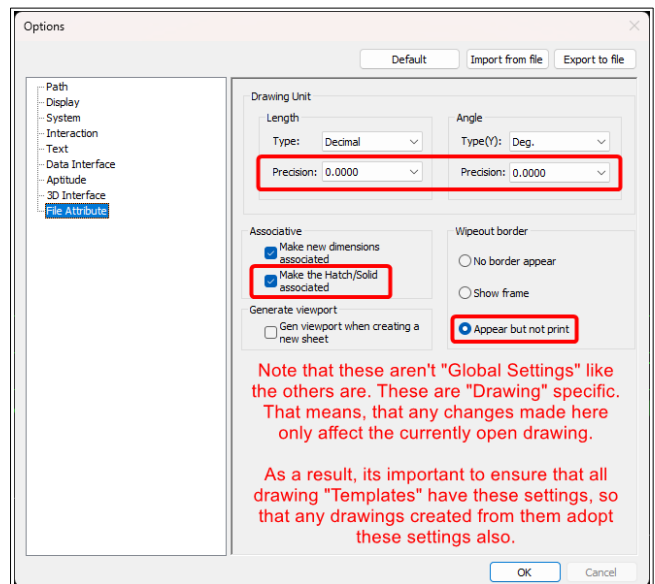


Company Drawing Standards

“Ask Whether to Fit Paper When Projecting” relates to changing the “Paper Scale” within “Paper Settings”. This should always remain as 1:1 when projecting in “Layout Space”.



Company Drawing Standards
(see button within BOM and others)



Company Drawing Standards

Note that these aren't “Global Settings” like the others are. These are “Drawing” specific. That means, that any changes made here only affect the currently open drawing.

As a result, its important to ensure that all drawing “Templates” have these settings.