

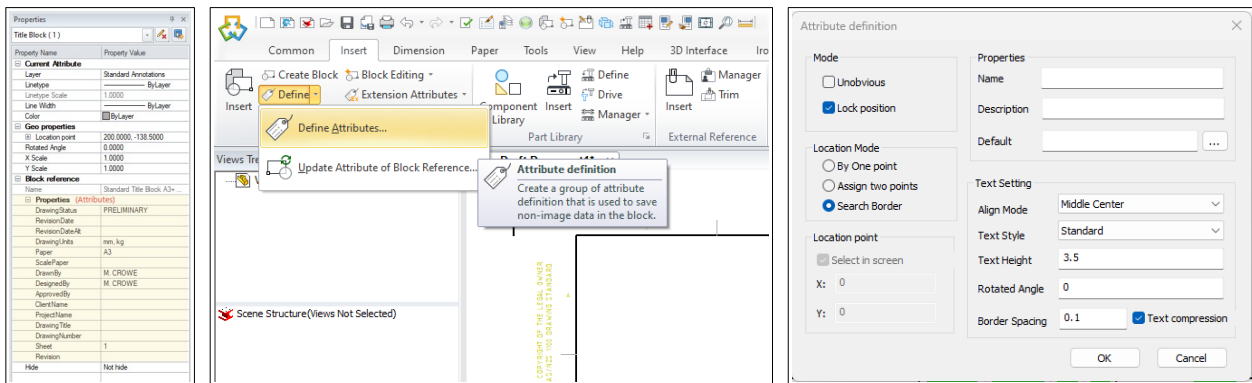
## IRONCAD DRAFT – BLOCKS – ATTRIBUTES AND EXTENDED ATTRIBUTES

2D Models of Parts and Assemblies within IRONCAD DRAFT can be represented as “Blocks” (a group of objects that act as a single object). Information can be attached to “Blocks” either internally as “Attributes” or externally as “Extended Attributes” (or a combination of both).

Both “Attributes” and “Extended Attributes” provide functionality that is similar to that of “Part Properties” within the 3D Scene, allowing the automatic populating of Bill of Materials (BOM) and Title Blocks. However, “Attributes” and “Extended Attributes” are different.

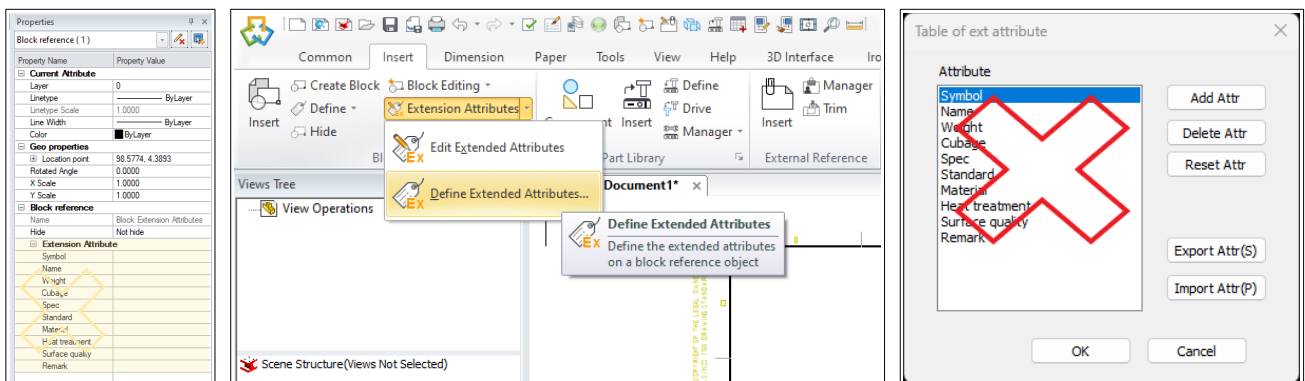
### Attributes:

Internal definitions included within all “instances” of the “Block”.  
Displayed and Edited in Edit Dialog Box (double-click on “Block”)  
Displayed and Edited in Properties Browser  
Can be Visible or Invisible  
Exported within \*.dwg files



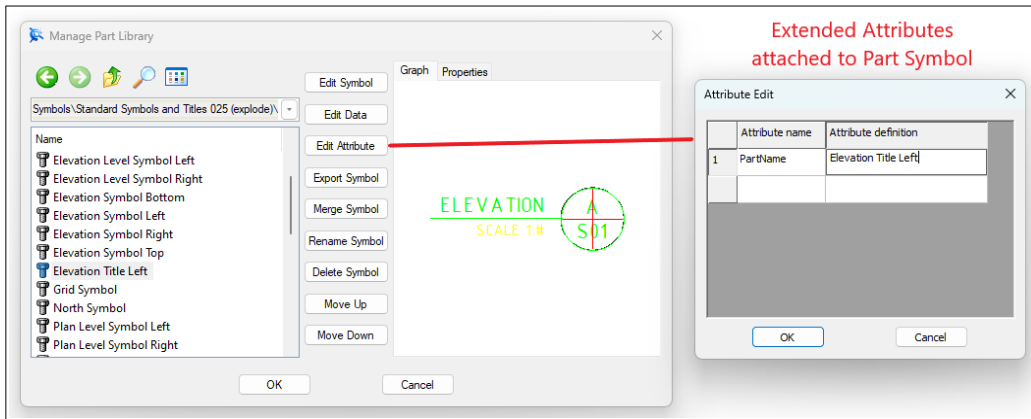
### Extended Attributes:

External definitions to that specific “instance” of the “Block” only.  
These are useful for “Nested Blocks” and CAXA “Part Symbols”  
Displayed and Edited in Edit Dialog Box (Ribbon Bar)  
Displayed and Edited in Properties Browser  
Override Attributes of the Same Name  
Invisible Only  
Not exported within \*.dwg files



Delete the default Attribute Names shown above and use the following Attribute Names. But only attach “Extended Attributes” that are needed, to avoid overriding existing “Attributes”.

This document is copyright of JAMES FORTEN INDUSTRIAL LTD and all rights are reserved.



For consistency, the names used for System and Custom Part Properties within the 3D Scene, should be used for Attributes and Extended Attributes of Blocks as well (if applicable). These need to be listed within the “Set Matching Rule” (within Options).

Attribute Names	
PartNumber	
PartDescription	
PartQuantity	
PartMass	
PartVolume	
MaterialDescription	
MaterialDesignation	
MaterialGrade	
MaterialSpecification	
MaterialStandard	
Note	
Revision	
RevisionDate	

Extended Attributes require a minimum of one Attribute Name. Use “PartName” for this purpose, and copy from the Block Name.

Attribute Name	Description	Attribute Value
PartName		
PartNumber		
PartDescription		
PartQuantity		
PartMass		
PartVolume		
MaterialDescription		
MaterialDesignation		
MaterialGrade		
MaterialSpecification		
MaterialStandard		
Note		
Revision		
RevisionDate		

Extended Attribute Names	
PartName	
PartNumber	
PartDescription	
MaterialDescription	
AssetNumber	
AssetDescription	

Attribute Name	Attribute Value
1 PartName	
2 PartNumber	
3 PartDescription	
4 PartQuantity	
5 PartMass	
6 PartVolume	

“Extended Attributes” definitions are Global Settings, saved in the following user data file. They can also be exported and imported as \*.atf files, for switching between definitions.

C:\Users\...\AppData\Roaming\CAXA\CAXA CAD ...\...\Temp\ebinfo.ini