

IRONCAD DRAFT – SETUP STYLES AND CONFIGURATIONS

IRONCAD DRAFT is set up with default **Styles** and **Configurations**; which can be changed to achieve the desired functionality and drawing output. When changes are made, these should be manually saved to (and loaded from) the following files:

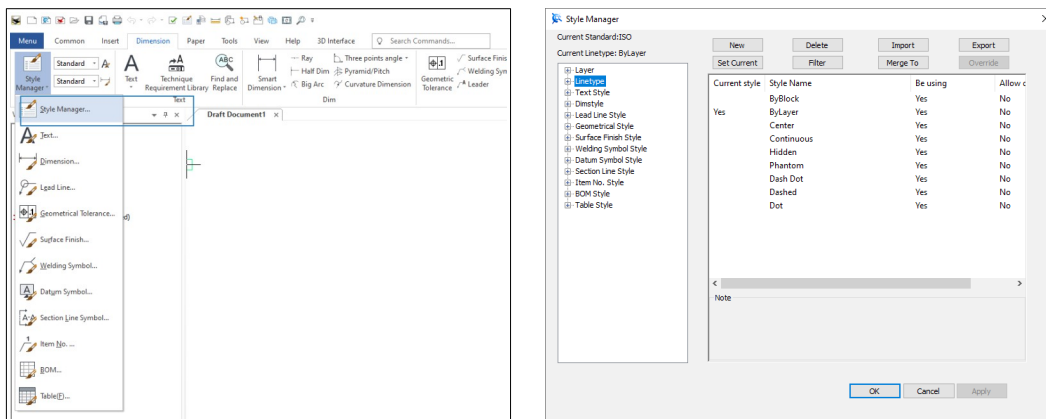
Drawing Styles Drawing Configuration (Options)	(* .exb or *.tpl)	Current Drawing
System Configuration (Options) User Interface Configuration Print Style Configuration Print Linetype Configuration Extended Attributes Definitions	(* .xml) (* .uic) (* .psf) (* .plf) (* .atf)	Global

Understanding what information is stored in Drawing and Template files is important; as **Drawing Style** and **Drawing Configuration** changes made while working in one Drawing (or Template) will not automatically apply to other drawings and templates. However, changes to the **System**, **User Interface**, **Print Style**, **Print Linetype** and **Extension Attribute** Definition and Configuration files are global.

Note that global configuration changes are remembered by IRONCAD DRAFT when the program “Exits” correctly. But to be able to load (import) the configurations, it is first necessary to save them to the external configuration files listed above.

DRAWING STYLES

IRONCAD DRAFT comes with default “Blank” drawing templates (BLANK.tpl) within each of the ANSI, GB, ISO and JIS template folders; along with various other sample templates. Each of these templates come loaded with Drawing “Styles” which can be edited and added to.



Any changes made to these “Styles” are saved in the current drawing (or template) only. As a result, it is recommended to set up all desired “Styles” within drawing templates before doing anything else. Drawings produced using these templates will then contain these “Styles”.

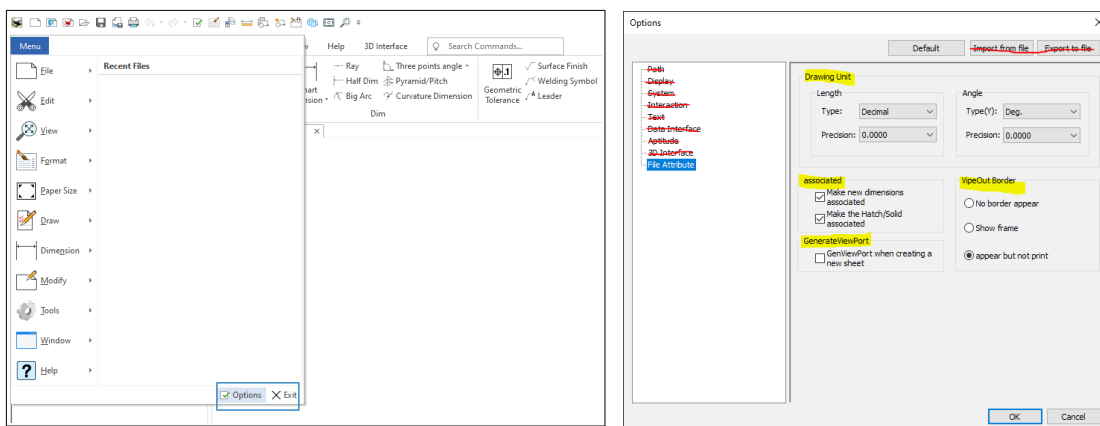
Some of the “Styles” (such as Layer) reference other “Styles” (such as Linetype). Start with the “Linetype” Styles, followed by the “Layer” Styles, and then continue in the order listed.

While the default “Standard” styles can be edited, maintain their names (Standard). However, regarding the 8 System Layers (that IRONCAD DRAFT needs and cannot be deleted), these can be renamed without problems. See separate document relating to these System Layers.

Note that it is possible (and relatively easy) to import “Styles” into your drawing from another drawing (or template); using the “Import” button in the Style Manager Dialog Box.

DRAWING CONFIGURATION (OPTIONS)

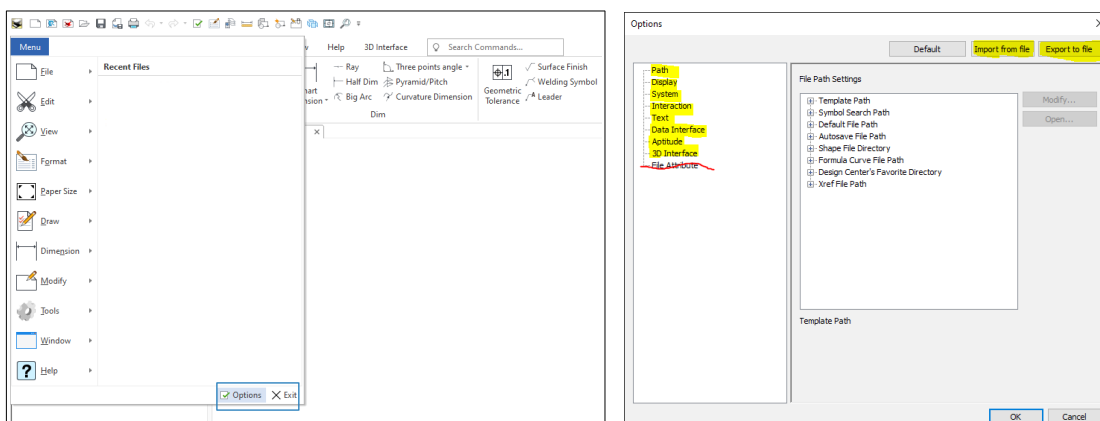
Along with the **Drawing Styles** described above, the **Drawing Configuration** options below (within the System Options) are saved within the current drawing (or template). Changes made to these drawing configuration options are not global in their effect.



SYSTEM CONFIGURATION (OPTIONS)

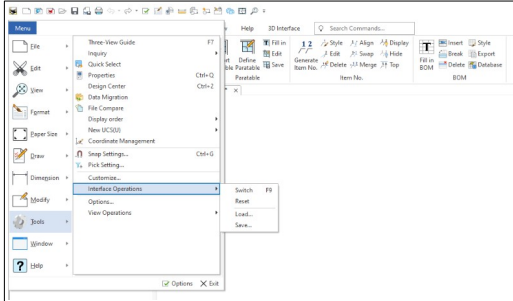
Changes to the following global options should be saved to a System Configuration file (*.xml) using the “Export to File” button. Multiple System Configuration files can be saved (client or project specific) and loaded at a later date using the “Import from File” button.

Note that the “**File Attribute**” section of this dialog box relates to the **Drawing Configuration**. These options are saved along with the **Drawing Styles** in the current drawing (or template).



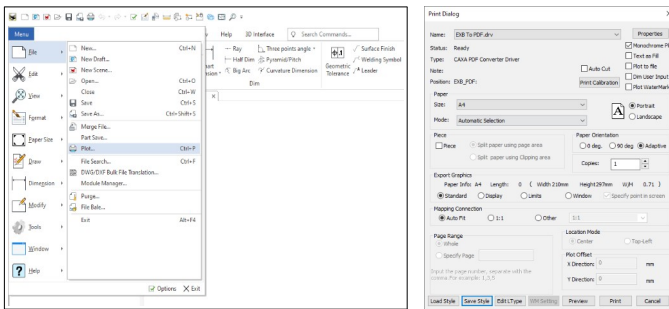
USER INTERFACE CONFIGURATION

Changes to the User Interface should be saved to a User Interface Configuration file (*.uic) using the “Save” menu selection. Multiple User Interface Configuration files can be saved (client or project specific) and loaded at a later date using the “Load” menu selection.



PRINT STYLE CONFIGURATION

Changes to the Print Style options should be saved to a Print Style Configuration file (*.psf) using the “Save Style” button. Multiple Print Style Configuration files can be saved (client or project specific) and loaded at a later date using the “Load Style” button.



PRINT LINETYPE CONFIGURATION

Changes to how Linetypes are printed should be saved to a Print Linetype Configuration file (*.plf) using the “Save Style” button. Multiple Print Linetype Configuration files can be saved (client or project specific) and loaded at a later date using the “Load Style” button.

