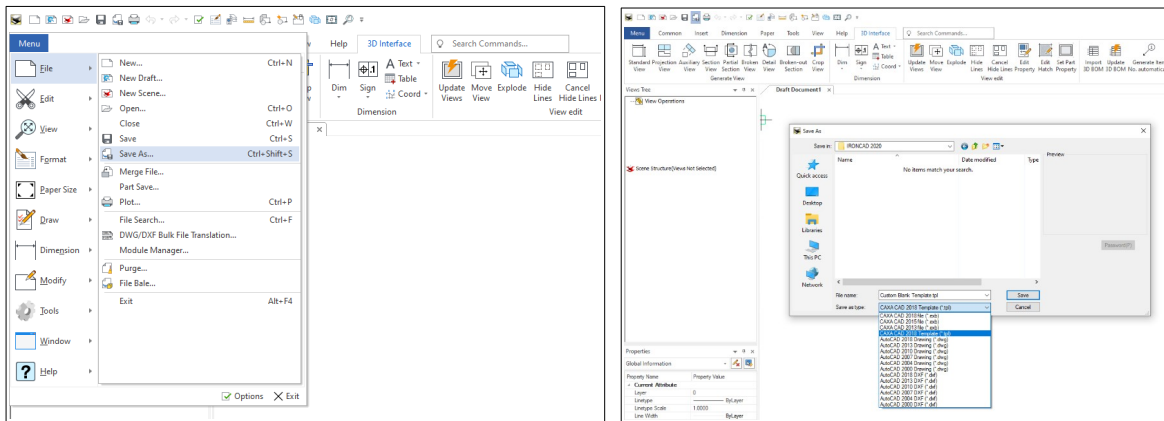


IRONCAD DRAFT – SETUP PROCEDURE

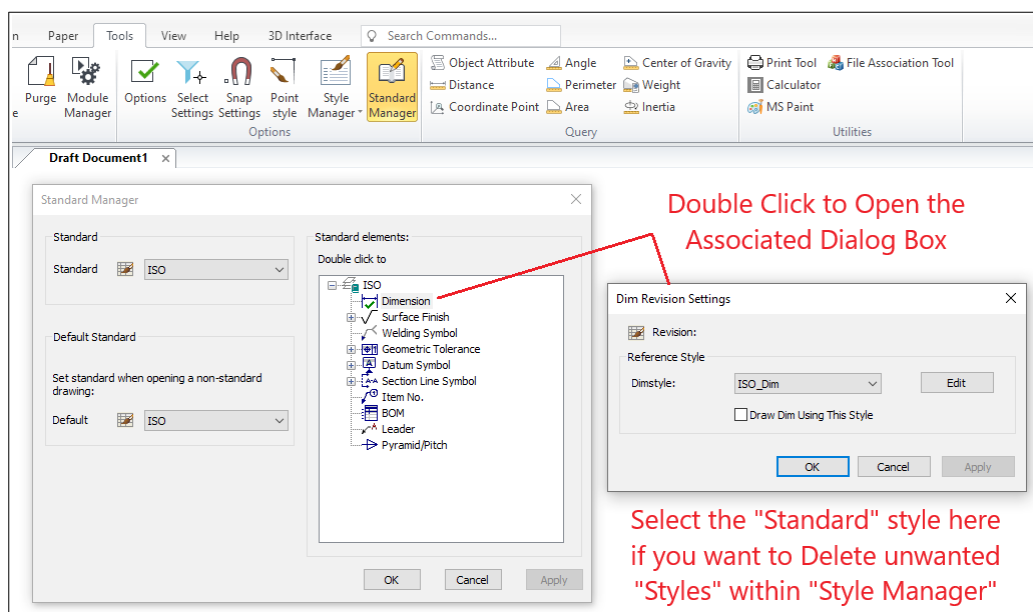
When setting up IRONCAD DRAFT some changes will be “Global” whereas others will be “Drawing (or Template) Specific”. See the document “Setup Styles and Configurations”.

1. Start IRONCAD DRAFT (or CAXA DRAFT in IRONCAD). A new drawing (named Draft Document1) will open based on whatever is set as the default drawing “Template”. For a new installation this will be based on “BLANK.tpl” (located in the Program Files).
2. “Save As” this blank open drawing as a new drawing “Template”. In the Save As Dialog Box choose the desired save location, select the template file type (*.tpl), and give the new custom template file a meaningful name.



Now any setup changes made to the **Drawing Styles** and **Drawing Configuration** can be saved with this new custom template (while it remains the current drawing).

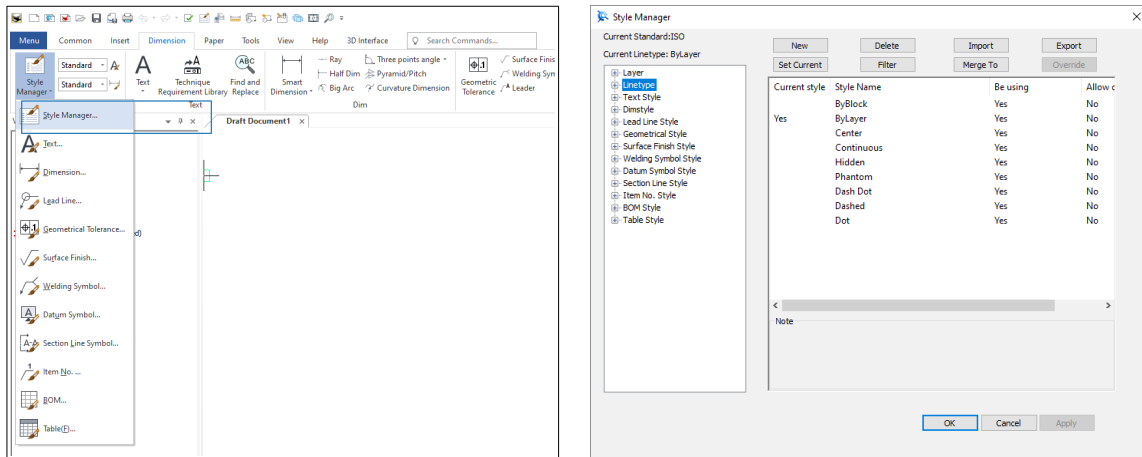
3. Open the “Standard Manager” and set the various **Drawing Styles** (Dimension, Surface Finish, etc...) to “Standard”. That is, if you want to delete unwanted preloaded **Drawing Styles** within “Style Manager” during the following step. Save the current drawing.



- Open “Style Manager” and make the desired changes to the **Drawing Styles**. These changes can be made manually, or you can “Import” Drawing Styles from another Drawing or Template.

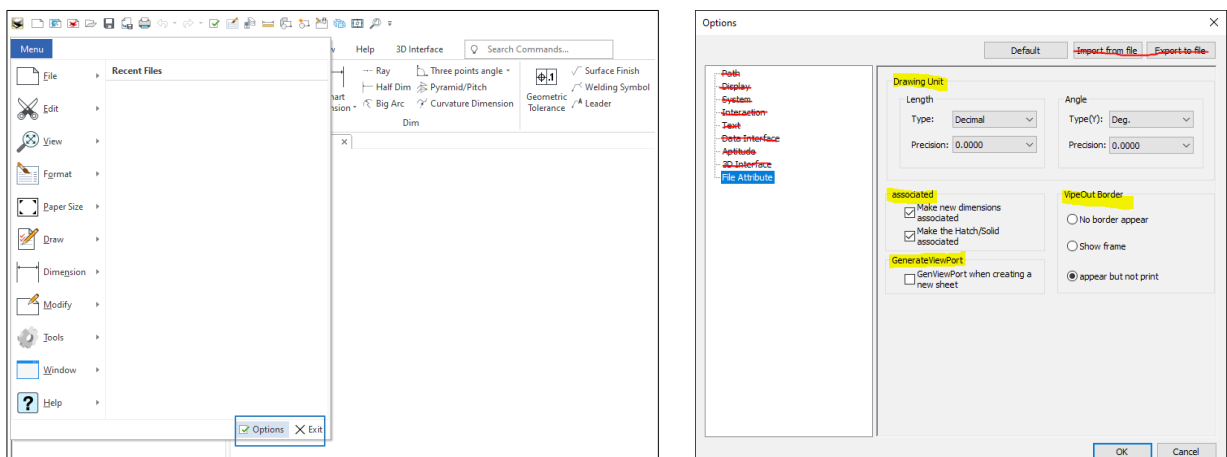
When importing **Drawing Styles**, you have the option to “Cover Same Name Style”. When selected, any existing **Drawing Styles** that have the same name as that being imported, will have their values over-written. This is very convenient for updating **Drawing Styles** within existing drawings.

When done close the dialog box using the “OK” button. Save the current drawing.



These “Drawing Style” changes need to be saved with the current drawing (or template in this instance). Save the current drawing after changes are made.

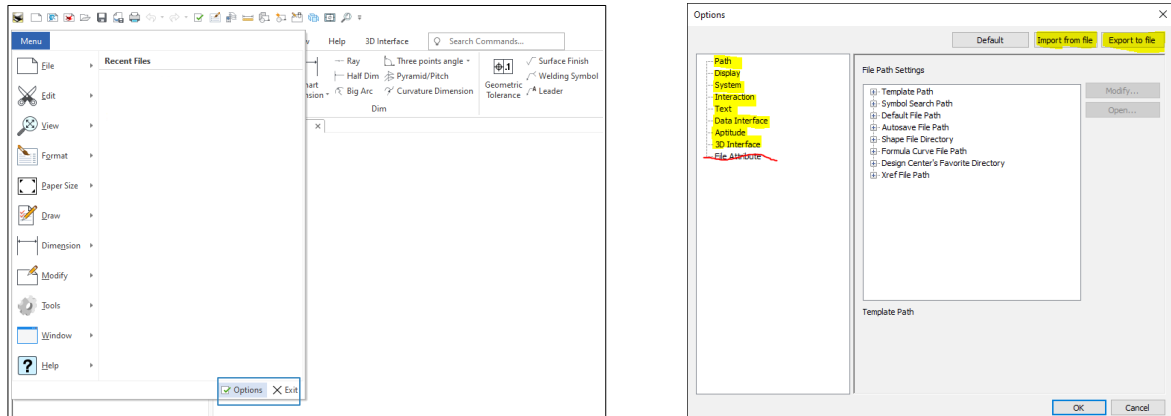
- Open the System “Options” Dialog Box, and select “File Attribute” (at the bottom of the list). These are **Drawing Configuration** options. Make the desired option selections then close the dialog box using the “OK” button. Save the current drawing.



These “Drawing Configuration” changes need to be saved with the current drawing (or template in this instance). Save the current drawing after changes are made.

- Open the System “Options” Dialog Box, and make any desired changes from “Path” at the top to “3D Interface” near the bottom. These **System Configuration** options are global settings, and are saved automatically when CAXA shuts down correctly.

For the purpose of “Importing” these settings back into this or another computer, save the settings to an external file using the “Export to File” button. This capability also enables you to have different settings for different applications.

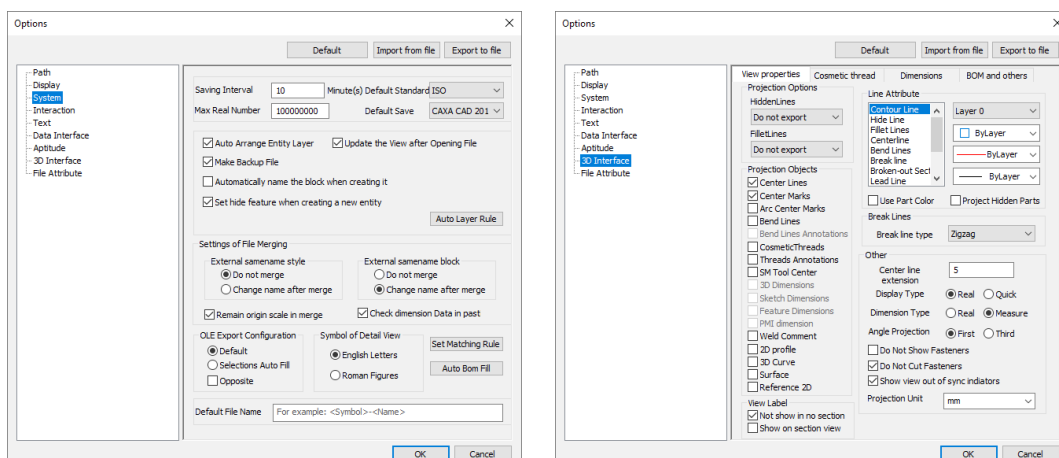


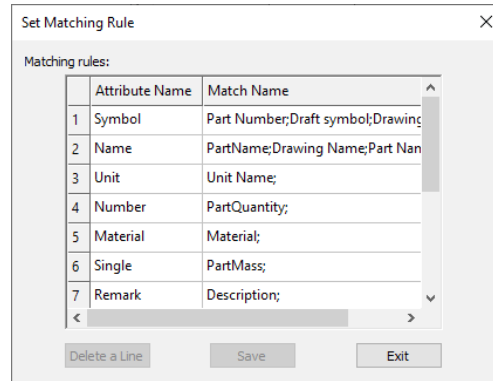
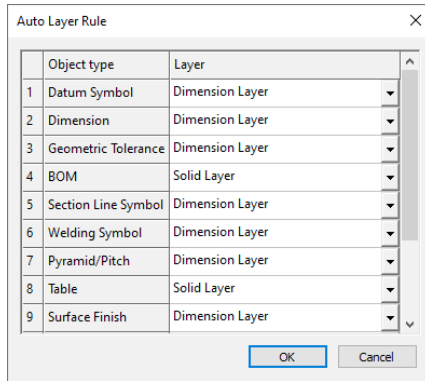
Within “Template Path” modify where user custom templates are located.

Within the “System” section there is an “Auto Layer Rule” button. Before making changes here, it is necessary to have already set up the Layer Styles in step 4 above.

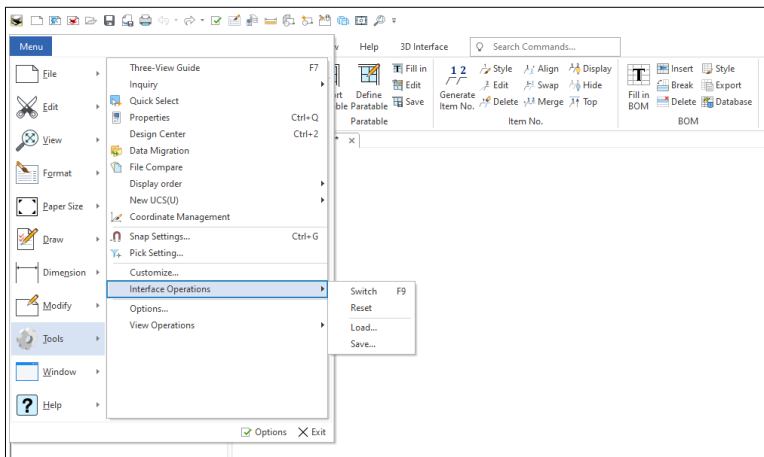
Also within the “System” section there is a “Set Matching Rule” button. This is where user created “Attributes” within BOMs and Title Blocks are matched to “Properties” within the Drawing (such as Paper Scale) and 3D Scene. See separate document.

Within the “3D Interface” section there are “Line Attribute” selections relating to the Projected Views. Before making changes here, it is necessary to have already set up the Linetype and Layer Styles in step 4 above.

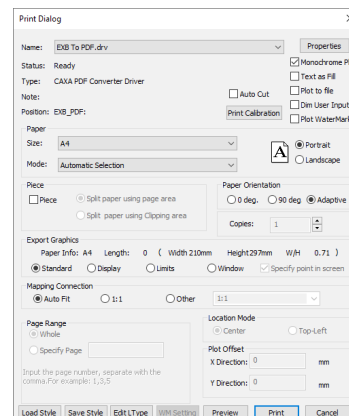
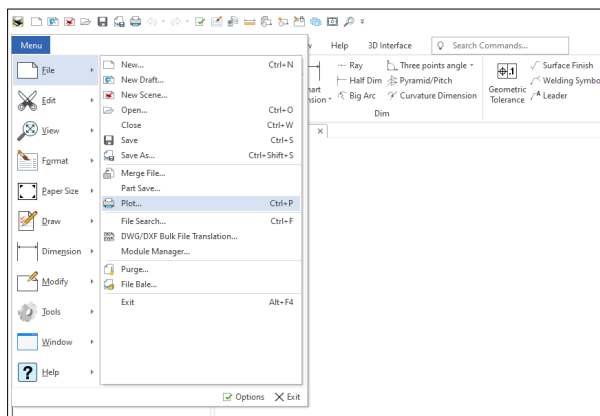




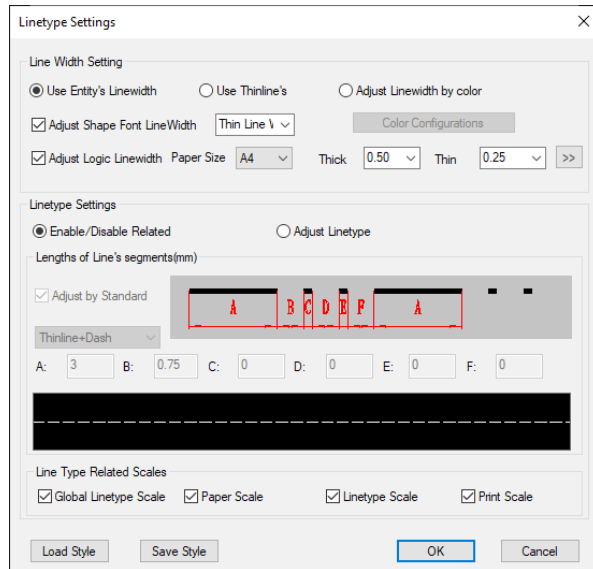
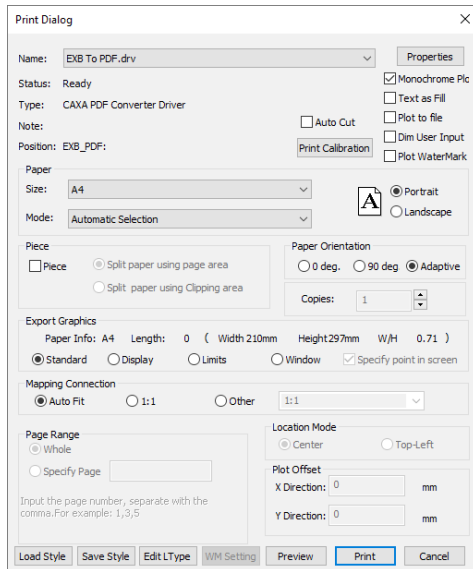
7. Customize the User Interface according to user preference. These **User Interface Configuration** options are global settings, and are saved automatically when CAXA shuts down correctly. For the purpose of “Loading” these customized settings back into this or another computer, save the settings to an external file using the “Save” menu selection.



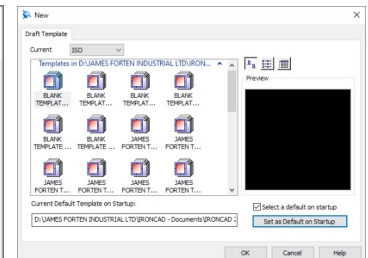
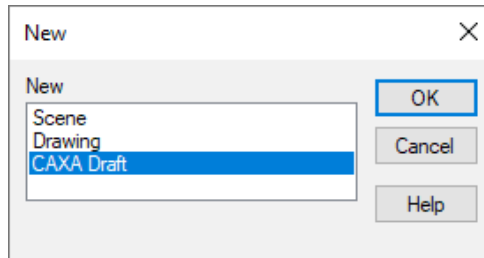
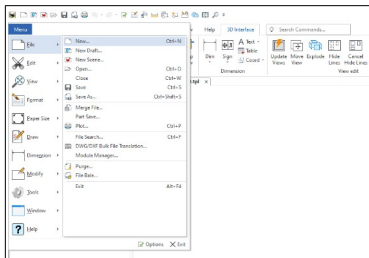
8. Open the “Print” Dialog Box, and make any desired changes. These **Print Style Configuration** options are global settings, and are saved automatically when CAXA shuts down correctly. For the purpose of “Loading” these customized settings back into this or another computer, save the settings to an external file using the “Save Style” button.



9. Open the “Print Linetype” Dialog Box from within the “Print” Dialog Box, and make any desired changes. These **Print Linetype Configuration** options are global settings, and are saved automatically when CAXA shuts down correctly. For the purpose of “Loading” these customized settings back into this or another computer, save the settings to an external file using the “Save Style” button.



10. Set the “Default Template on Startup” by selecting “New Doc”, then “CAXA Draft”. This will open the “New” Dialog Box. Select the desired template and then click on the “Set as Default on Startup” button. Click on the “Cancel” button to close the dialog box.



11. Close the current drawing (template) and “Exit” the program.

This concludes the steps involved in setting up IRONCAD DRAFT (or CAXA DRAFT in IRONCAD) with customized Configuration Settings and a customized Blank Template.

There can be a lot of time involved in some of these steps (such as in setting up all of the Styles). See additional documents that go into more of these details.

The next steps involve creating customized Drawing Frames and Title Blocks, along with additional customized Templates (that contain these Drawing Frames and Title Blocks). Before tackling the creation of these it is beneficial to have an understanding of DWG “Blocks”, as this is essentially what these Drawing Frames and Title Blocks are.