

IRONCAD DRAFT – BOM - OVERVIEW

This document is intended to provide a basic overview only (to provide some context).

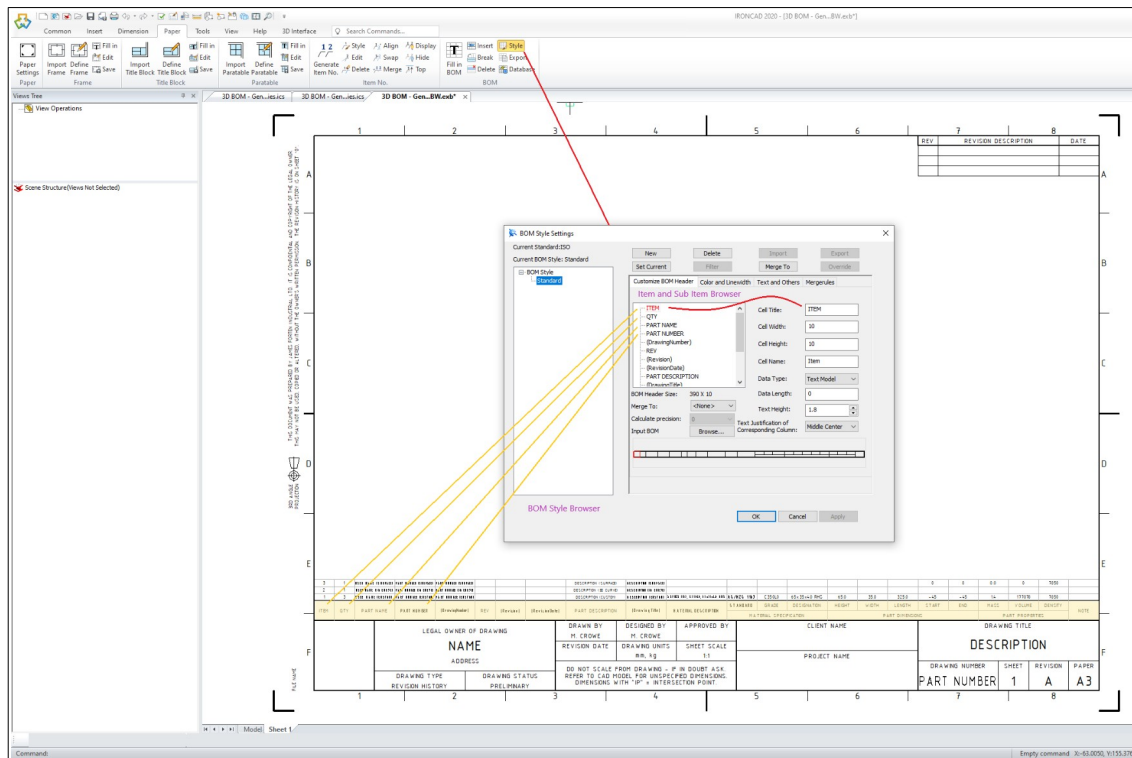
CAXA BOM Capabilities
Data from all Attributes within 2D Blocks can be accessed and displayed by the BOM.
Data from all BOM Items and Sub Items (Columns) can be accessed by “Item Numbers” and “Title Block Attributes”; whether they are displayed (visible) in the BOM or not (invisible).
Data from all BOM Items and Sub Items can be exported to an MS Excel Spreadsheet.
Data from all Properties (including Custom) in the 3D Scene can be accessed.
Different BOM Style selections possible for each Sheet (Paper).
Only one BOM can be inserted within any Sheet (Paper).
Multiple BOM Sources can be imported into any Sheet (Paper).
Parts and Assemblies at “the same level” in the 3D Scene can be easily displayed together.
Parts and Assemblies at “different levels” in the 3D Scene can be displayed together using multiple BOM Sources.

Regarding BOMs (Bill of Materials) and Item Numbers within CAXA, it's helpful to be aware of the following Dialog Boxes and the settings within them. Some of these relate to Setup only (such as BOM Styles), whereas others are used for every Drawing.

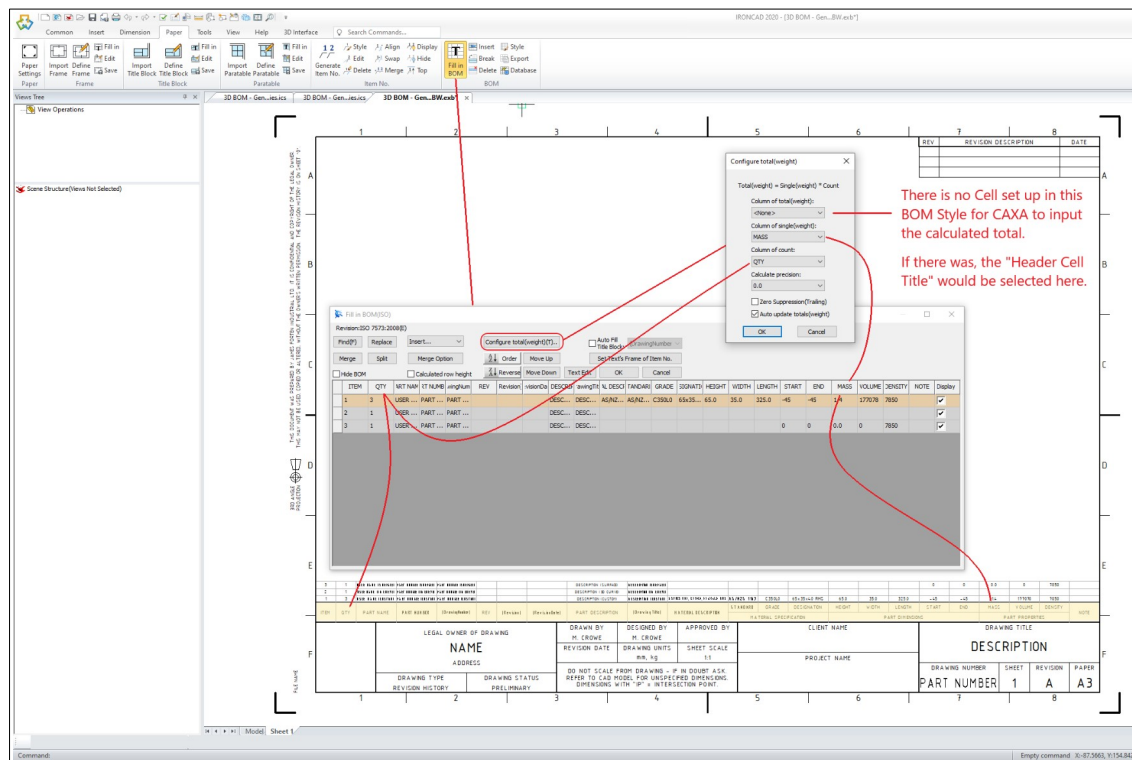
BOM and Item Number Dialog Boxes	Location	When Used
BOM Style	Ribbon/Paper/BOM	Setup
Configure Total	“Fill In BOM” Dialog Box	Drawing (Optional)
Database Operation	Ribbon/Paper/BOM	Drawing (Optional)
Fill in BOM	Ribbon/Paper/BOM	Drawing
Import 3D BOM	Ribbon/3D Interface/Remark	Drawing
Item Number Style	Ribbon/Dimension/Style Manager	Setup
Item Number Text Frame	“Fill In BOM” Dialog Box	Drawing
Merge Option (BOM Style)	“Fill In BOM” Dialog Box	Setup
Paper Settings	Ribbon/Paper/Paper	Drawing
Set Matching Rule	Options/System	Setup
Update 3D BOM	Ribbon/3D Interface/Remark	Drawing

For additional information beyond this document, refer to the following detailed documents.

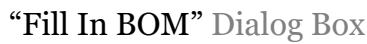
BOM Styles	Custom BOMs	Part Property Names
Set Matching Rule	Standard BOM	

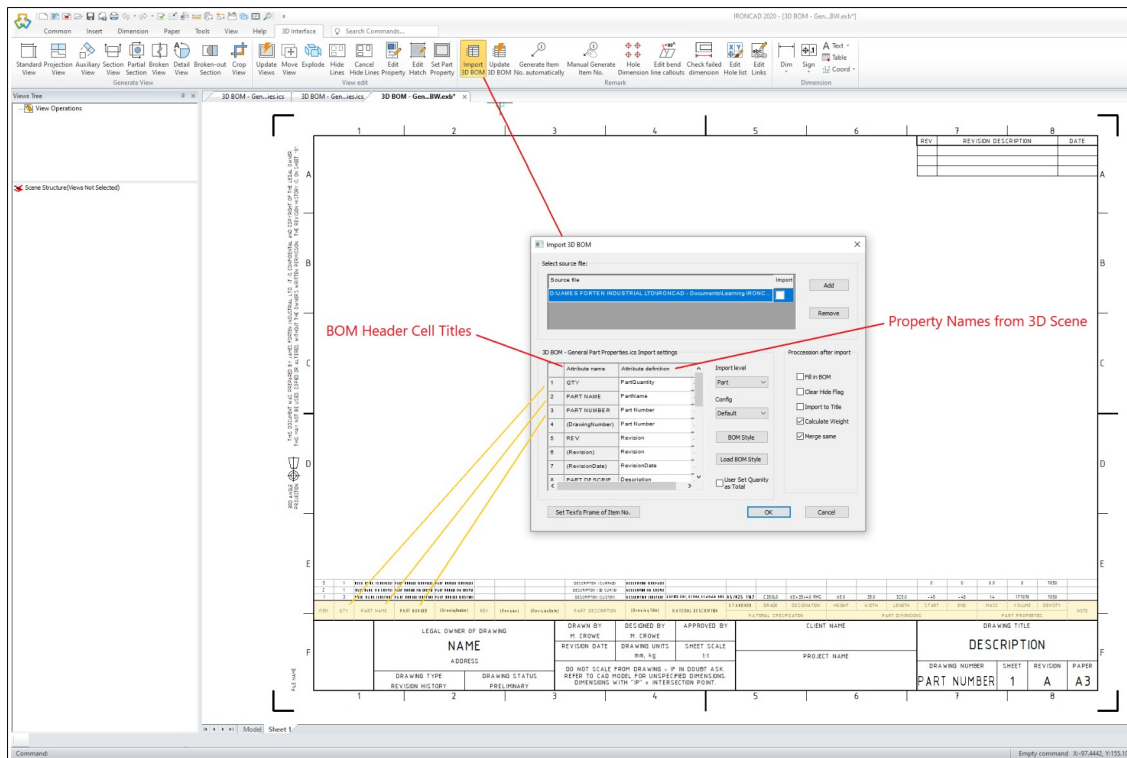


“BOM Style” Dialog Box

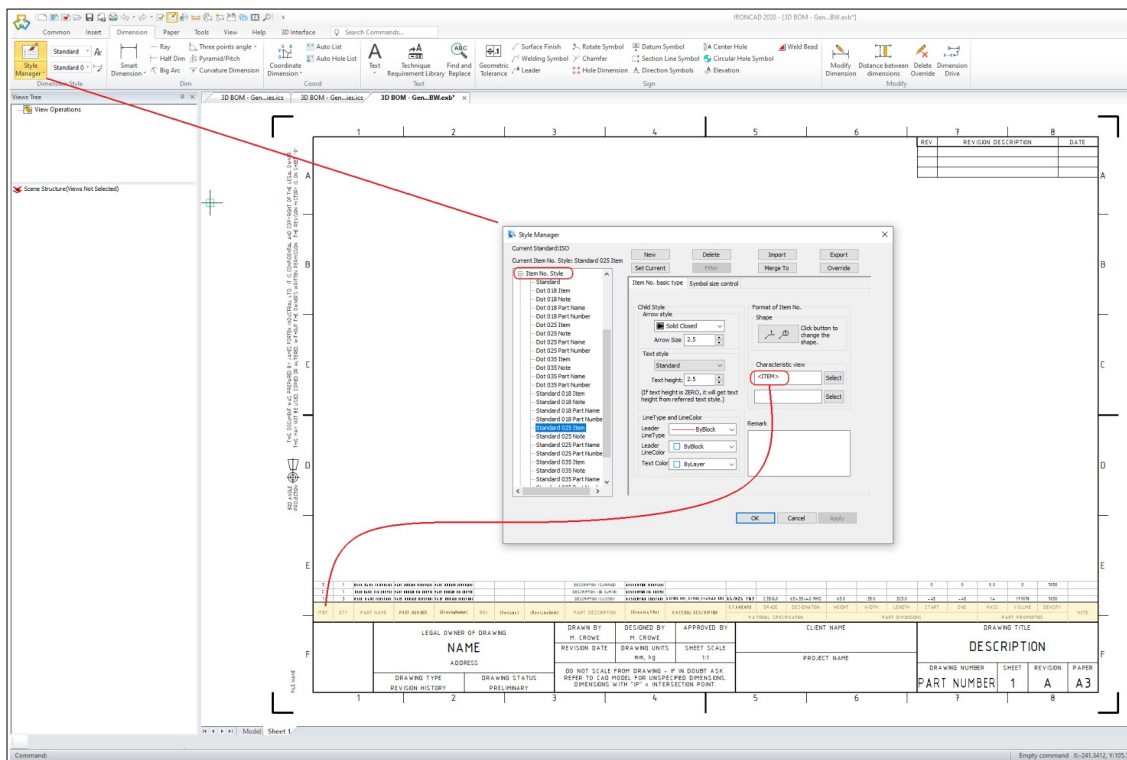


“Configure Total” Dialog Box

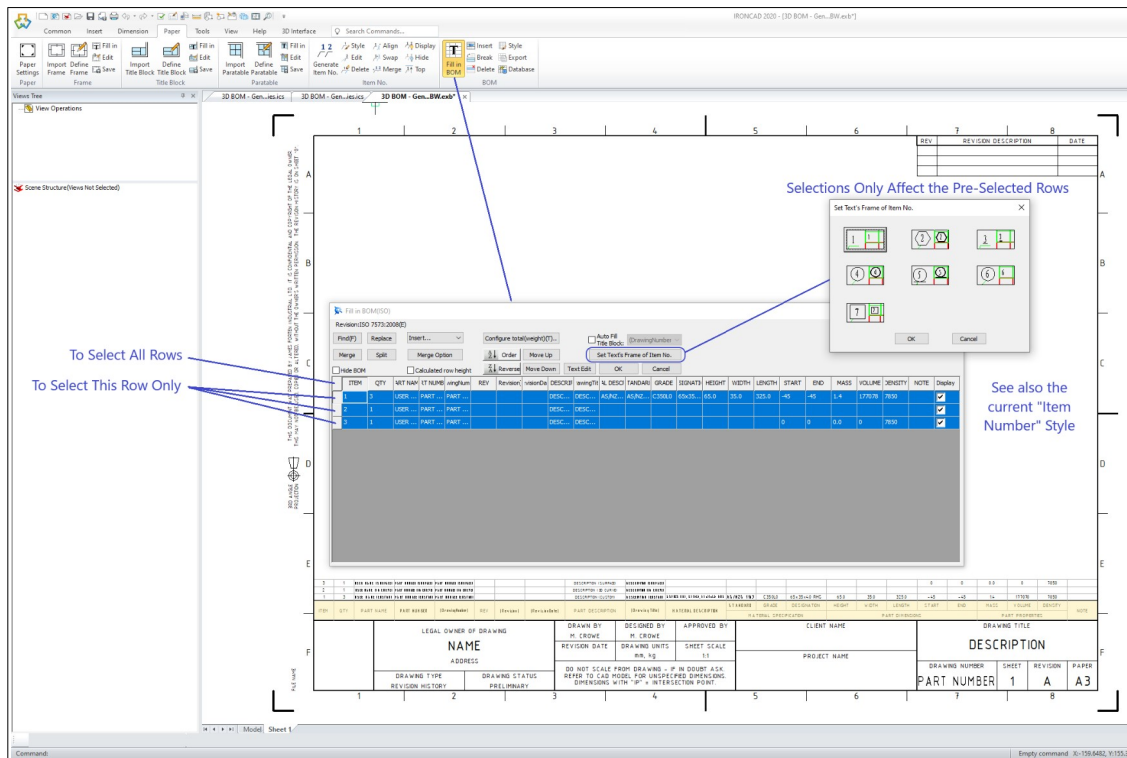




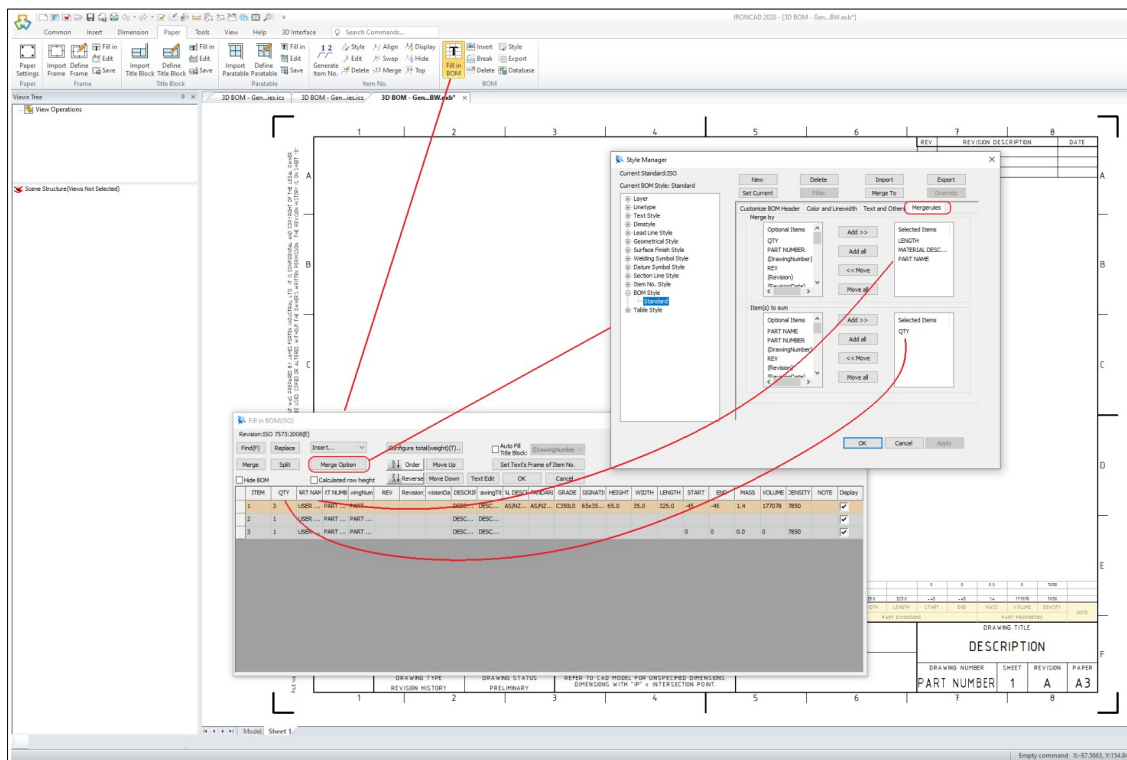
“Import 3D BOM” Dialog Box



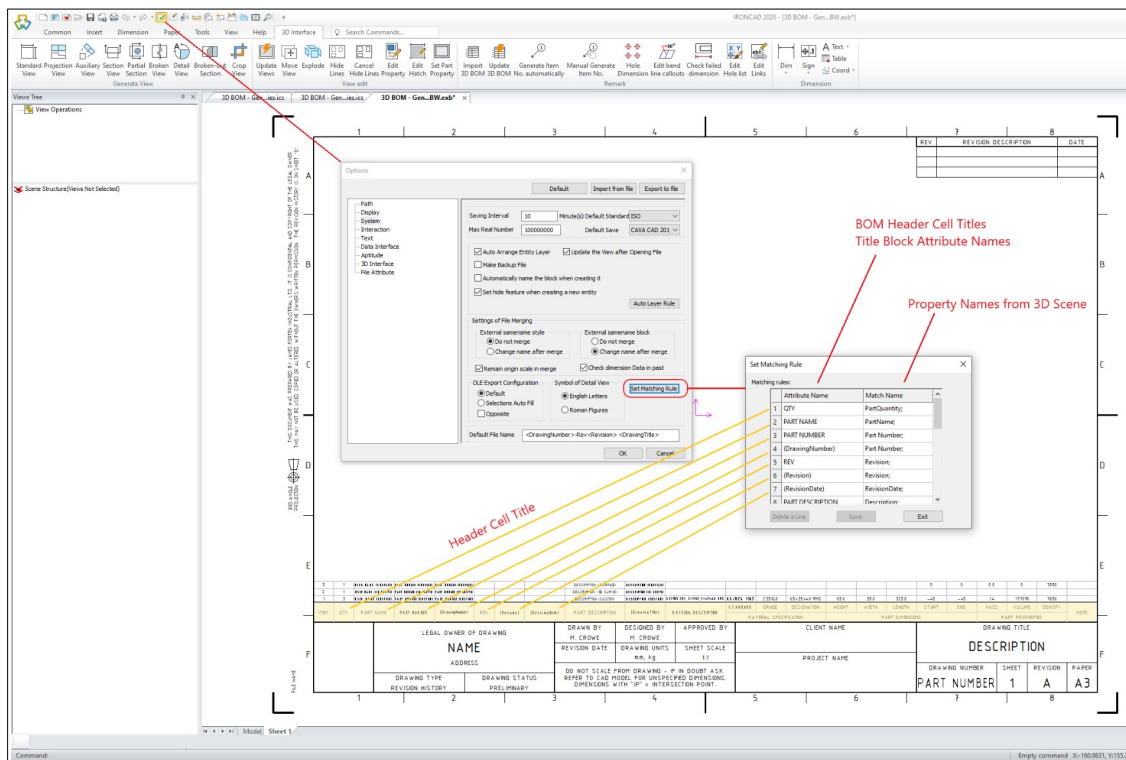
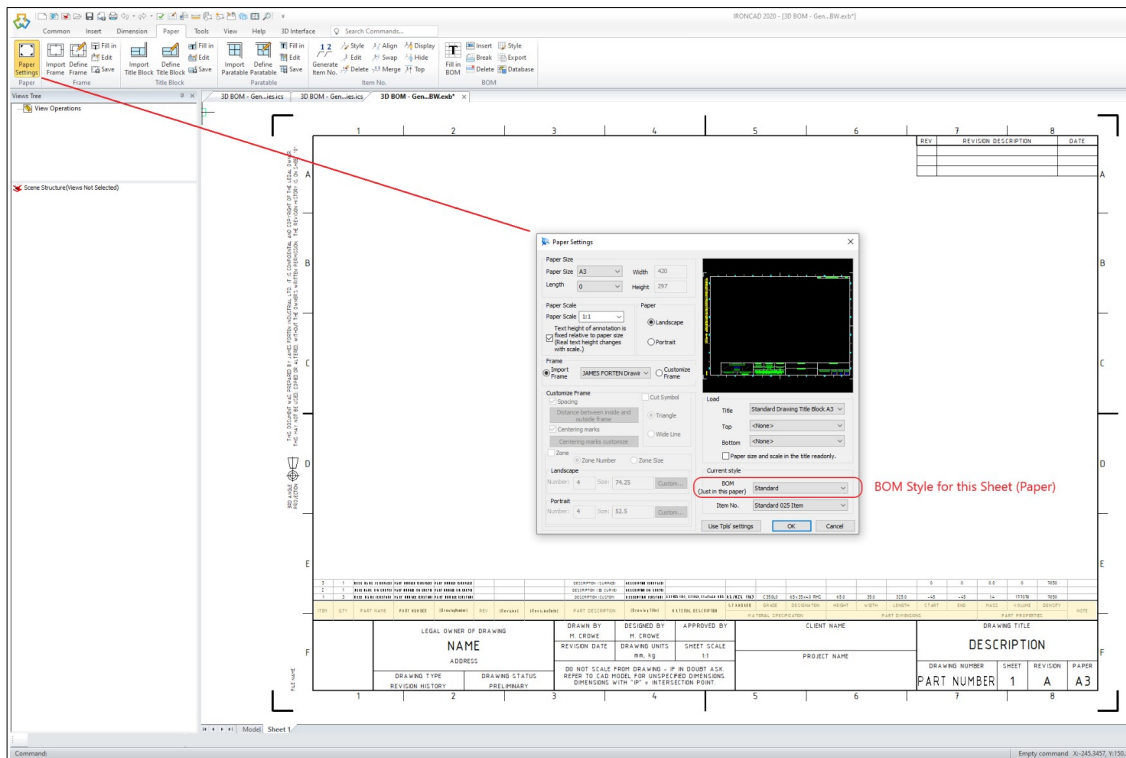
“Item Number Style” Dialog Box

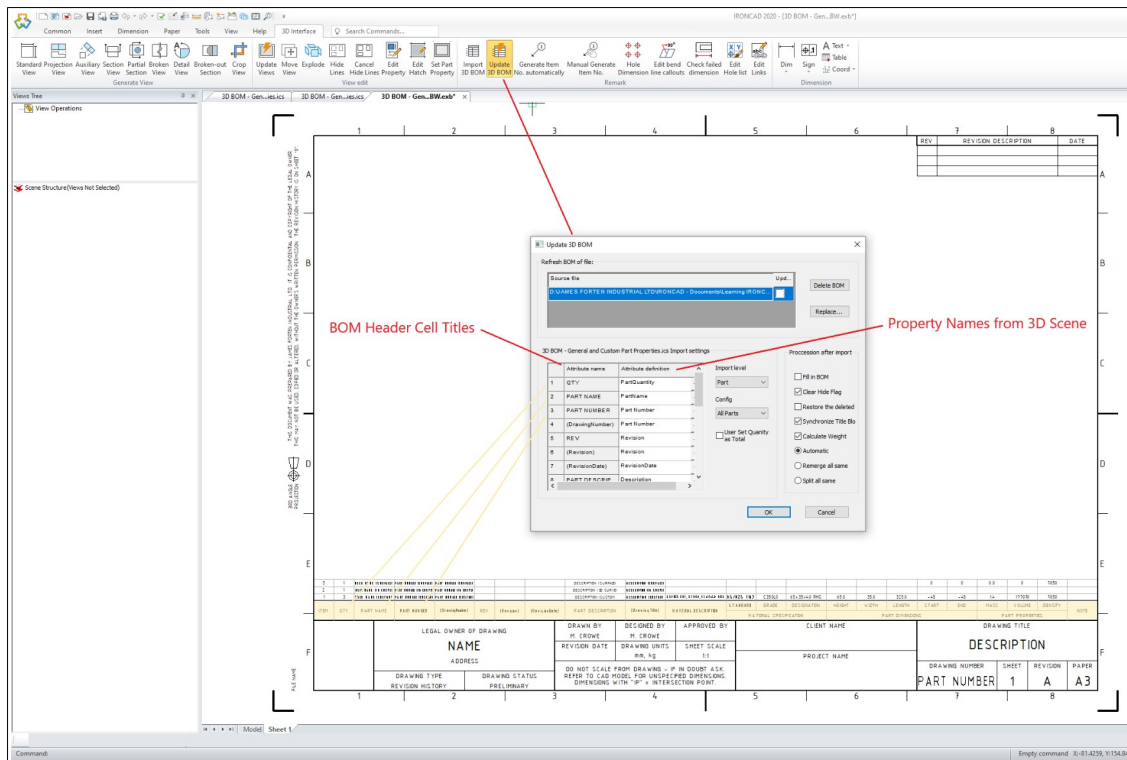


“Item Number Text Frame” Dialog Box



“Merge Option” Dialog Box





“Update 3D BOM” Dialog Box