

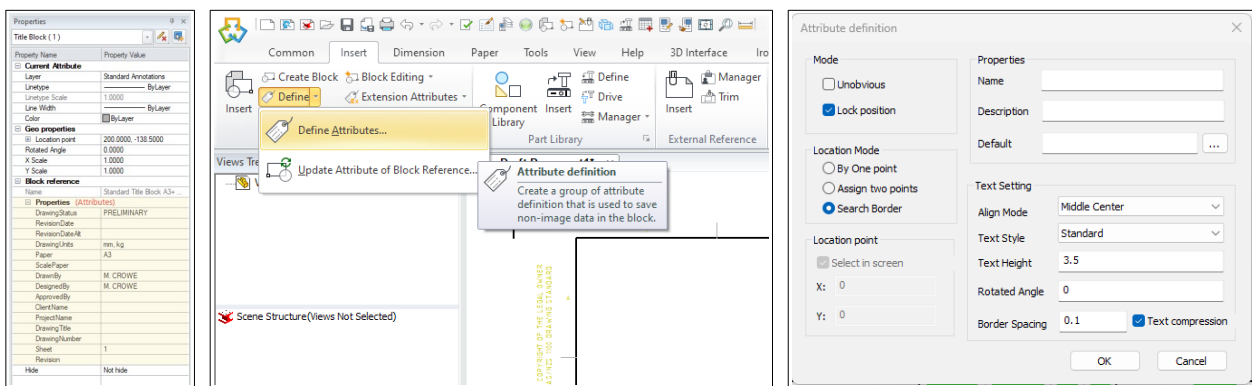
IRONCAD DRAFT – BLOCKS – ATTRIBUTES AND EXTENDED ATTRIBUTES

2D Models of Parts and Assemblies within IRONCAD DRAFT can be represented as “Blocks” (a group of objects that act as a single object). Information can be attached to “Blocks” either internally as “Attributes” or externally as “Extended Attributes” (or a combination of both).

Both “Attributes” and “Extended Attributes” provide functionality that is similar to that of “Part Properties” within the 3D Scene, allowing the automatic populating of Bill of Materials (BOM) and Title Blocks. However, “Attributes” and “Extended Attributes” are different.

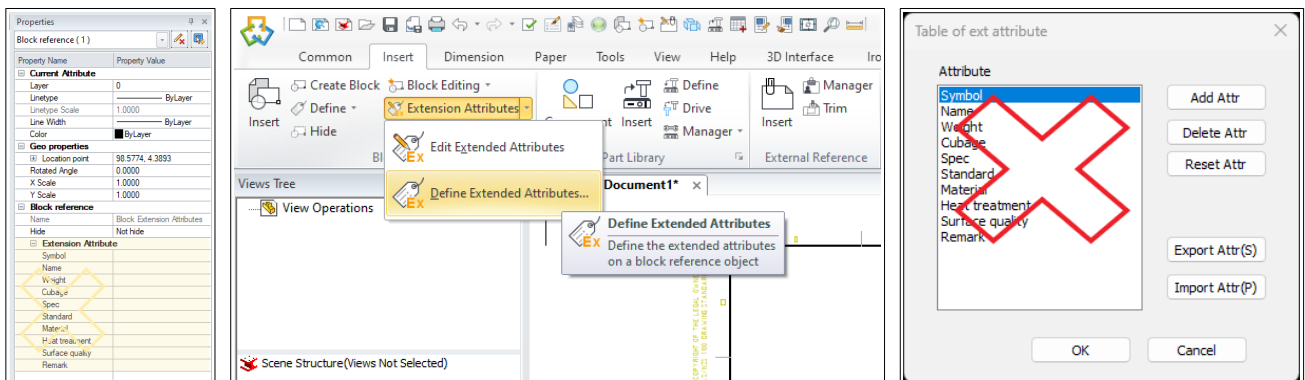
Attributes:

Internal and unique to that specific “instance” of the “Block”.
Displayed and Edited in Edit Dialog Box (double-click on “Block”)
Displayed and Edited in Properties Browser
Can be Visible or Invisible

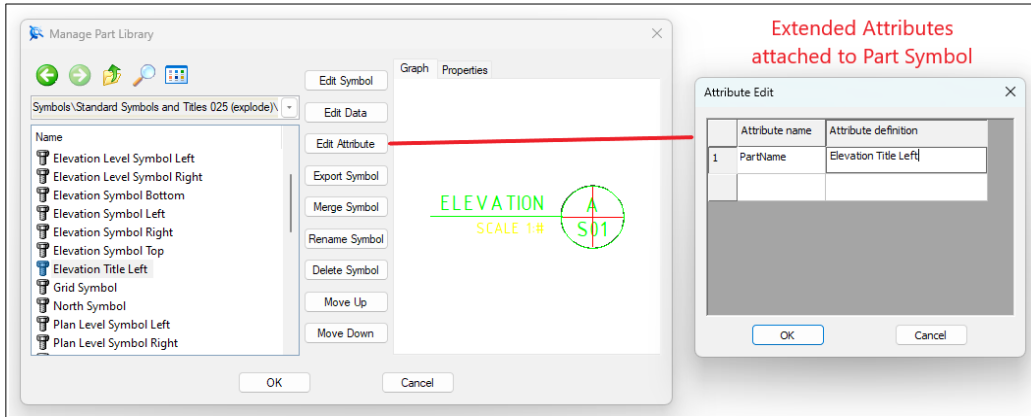


Extended Attributes:

External and unique to that specific “instance” of the “Block”.
These are useful for “Nested Blocks” and CAXA “Part Symbols”
Displayed and Edited in Edit Dialog Box (Ribbon Bar)
Displayed and Edited in Properties Browser
Override Attributes of the Same Name
Invisible Only



Delete the default Attribute Names shown above and use the following Attribute Names. But only attach “Extended Attributes” that are needed, to avoid overriding existing “Attributes”.

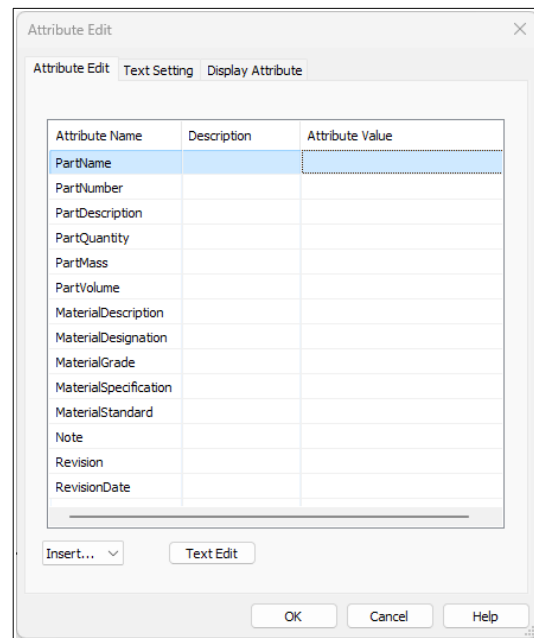


For consistency, the names used for System and Custom Part Properties within the 3D Scene, should be used for Attributes and Extended Attributes of Blocks as well (if applicable). These need to be listed within the “Set Matching Rule” (within Options).

Attribute Names

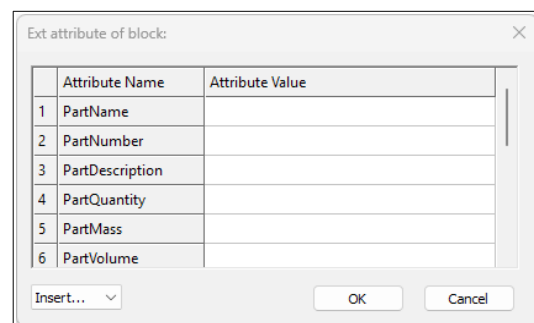
PartNumber
PartDescription
PartQuantity
PartMass
PartVolume
MaterialDescription
MaterialDesignation
MaterialGrade
MaterialSpecification
MaterialStandard
Note
Revision
RevisionDate

Extended Attributes require a minimum of one Attribute Name. Use “PartName” for this purpose, and copy from the Block Name.



Extended Attribute Names

PartName
PartNumber
PartDescription
MaterialDescription
AssetNumber
AssetDescription



“**Extended Attributes**” definitions are Global Settings, saved in the following user data file. They can also be exported and imported as *.atf files, for switching between definitions.

C:\Users\...\AppData\Roaming\CAXA\CAXA CAD ... \... \Temp\ebinfo.ini